



Purity Specifications





Purity Specifications

At NOW® we take the quality and purity of our essential oils very seriously. We have made long-term investments in the instrumentation and the professional staff necessary to guarantee the identity, purity, and quality of our essential oils. We work closely with our growers and suppliers to safeguard the quality of our raw materials. By confirming all aspects of essential oil quality, we promise that what is on the label is what is in the bottle!

We have established long-lasting relationships with our suppliers, helping assure the quality and availability of our essential oils. We have also developed a stringent vendor qualification program, allowing us to source only high quality oils. We also make certain our oils are Non-GMO Project Verified and Cruelty-Free.

Factors such as global market conditions, geographical sourcing, and unanticipated weather events can affect the quality of the oils from year-to-year. These are similar concerns for many natural products when supply is constrained. Periodically, we have seen examples of dilution, substitution, and even the use of synthetic alternatives masquerading as their natural counterparts. Our procedures assure that these types of undesirable products never reach our customers.

CONFIRMING IDENTITY AND PURITY

NOW® assesses the quality of our essential oils through the evaluation of purity and identity. This protects our retailers and consumers, ensuring they get the product they paid for. We utilize numerous physical or physiochemical techniques, including:

- Instrumental testing such as Refractive Index, Optical Rotation, Specific Gravity, Gas Chromatography-Mass Spectrometry (GC-MS), and Inductively Coupled Mass Spectrometry (ICP-MS);
- Organoleptic Evaluation, focusing on appearance and odor.

TESTING IS THE DIFFERENCE

The orthogonal approach to essential oil testing by NOW® facilitates a complete characterization of the essential oil and guarantees the product identity, purity, and safety.

NOTE ABOUT THERAPEUTIC GRADE

Labeling an essential oil therapeutic, medicinal, or aromatherapy grade could be misleading. A number of companies use these terms, even though no governmental agency or other pharmacopeial organization approved grading standard is used consistently throughout the essential oil industry. This terminology can be used by any brand as a misleading measure of quality and has no real bearing on the identity, purity, or safety of an essential oil.

Index

Anise	3	Lemon Eucalyptus	41
Atlas Cedar	4	Lemongrass	42
Atlas Cedar, ORGANIC	5	Lemongrass, ORGANIC	43
Balsam Fir Needle	6	Lime	44
Basil	7	Marjoram	45
Bergamot	8	Myrrh	46
Bergamot, ORGANIC	9	Neroli	47
Black Pepper	10	Nutmeg	48
Blue Tansy	11	Orange	49
Camphor	12	Orange, ORGANIC	50
Cardamom	13	Oregano	51
Carrot Seed	14	Oregano, ORGANIC	52
Cedarwood	15	Patchouli	53
Chamomile, Roman	16	Patchouli, ORGANIC	54
Cinnamon Bark	17	Pennyroyal	55
Cinnamon Cassia	18	Peppermint	56
Cinnamon Cassia, ORGANIC	19	Peppermint, ORGANIC	57
Citronella	20	Pine Needle	58
Clary Sage	21	Rose Absolute	59
Clove	22	Rosemary	60
Clove, ORGANIC	23	Rosemary, ORGANIC	61
Cypress	24	Sage	62
Eucalyptus Globulus	25	Sandalwood	63
Eucalyptus Globulus, ORGANIC	26	Spearmint	64
Eucalyptus Radiata	27	Spearmint, ORGANIC	65
Frankincense	28	Spike Lavender	66
Geranium	29	Tangerine	67
Geranium, ORGANIC	30	Tea Tree	68
Ginger	31	Tea Tree, ORGANIC	69
Grapefruit	32	Turmeric	70
Helichrysum	33	Vetiver	71
Hyssop	34	White Thyme	72
Jasmine Absolute	35	Wintergreen	73
Juniper Berry	36	Ylang Ylang Extra	74
Lavender	37		
Lavender, ORGANIC	38		
Lemon	39		
Lemon, ORGANIC	40		

Anise



Suggested Use: For aromatherapy use. For all other uses, carefully dilute with a carrier oil such as jojoba, grapeseed, olive, or almond oil prior to use. Please consult an essential oil book or other professional reference source for suggested dilution ratios.

Natural essential oils are highly concentrated and should be used with care.

Caution: Keep out of reach of children. Avoid contact with eyes. If pregnant or lactating, consult your healthcare practitioner before using. Not for internal use.

100% pure
star
anise
Illicium verum
Net 1 fl. oz. (30 mL)

Ingredients: 100% pure star anise oil.

Aroma: Licorice-like, spicy.

Benefits: Uplifting, balancing, comforting.

Mixes Well With: cedarwood oil, lime oil, orange oil, vanilla concentrate oil.

Extraction Method: Steam Distilled from ripened seed of plant.

Purity Tested/Quality Assured

NOW Foods
10000 E. 15th Ave. #20108, USA
nowfoods.com/novastore

7 33739 07515 4

Code 7515 VB

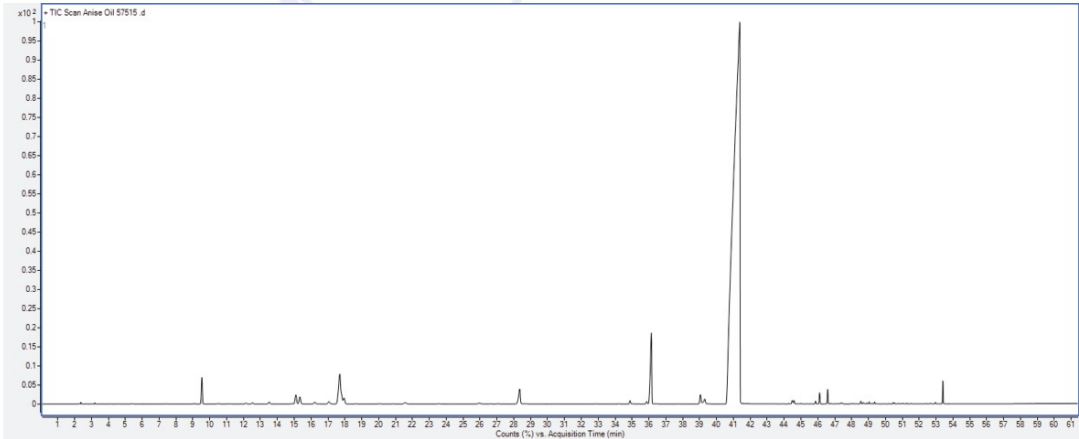
INCI NAME: *Illicium verum*
Plant Part: Ripened seed of plant
Processing: Steam Distillation

PHYSICAL CHARACTERISTICS

Specific Gravity: 0.976 – 0.988
Refractive Index: 1.553 – 1.560
Optical Rotation: –2 to +1 DEG

Typical Gas Chromatogram

CHEMICAL CHARACTERISTICS



Atlas Cedar



Suggested Use: For aromatherapy use. For all other uses, carefully dilute with a carrier oil such as jojoba, grapeseed, olive, or almond oil prior to use. Please consult an essential oil book or other professional reference source for suggested dilution ratios.

Natural essential oils are highly concentrated and should be used with care.

Caution: Keep out of reach of children. Avoid contact with eyes. If pregnant or lactating, consult your healthcare practitioner before using. **Not for internal use.**

100% pure
atlas cedar
Cedrus atlantica
Net 1 fl. oz. (30 mL)

Ingredients: 100% pure atlas cedar oil.

Aroma: Sweet, woody.

Attributes: Grounding, centering, balancing.

Male Clarity Blend: Add 1 drop of atlas cedar oil, 2 drops of cypress oil and 5 drops of sandalwood oil blend to a diffuser and enjoy.

Extraction Method: Steam Distilled from wood.

Purity Tested/Quality Assured

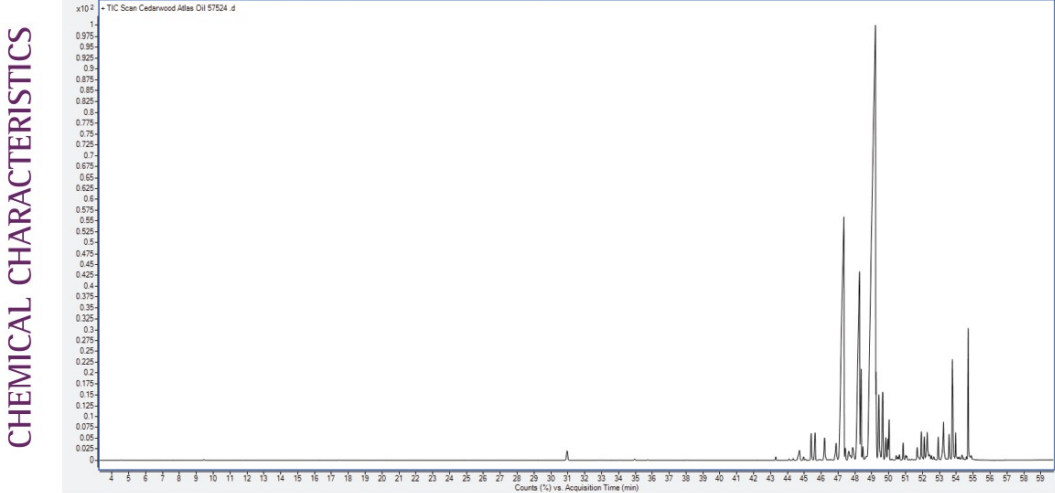
Code 7526 v3

INCI NAME: *Cedrus atlantica*
Plant Part: Wood
Processing: Steam Distillation

PHYSICAL CHARACTERISTICS

Specific Gravity: 0.925 – 0.945
Refractive Index: 1.506 – 1.513

Gas Chromatogram



ORGANIC
Atlas Cedar



Suggested Use: For aromatherapy use. For all other uses, carefully dilute with a carrier oil such as jojoba, grapeseed, olive, or almond prior to use. Please consult an essential oil book or other professional reference source for suggested dilution ratios.

Natural essential oils are highly concentrated and should be used with care.

Caution: Keep out of reach of children. Avoid contact with eyes. If pregnant or nursing, consult your healthcare practitioner before using. **Not for internal use.**

certified organic & 100% pure
atlas cedar
Cedrus atlantica
1 fl. oz. (30 mL)

USDA
ORGANIC

Ingredient: Organic Cedrus Atlantica (Atlas Cedar) Wood Oil.

Aroma: Sweet, woody.

Attributes: Grounding, centering, balancing.

Mixes Well With: cypress oil, juniper oil, rose oil, sandalwood oil.

Extraction Method: Steam Distilled from wood.

NOW® Essential Oils are analytically tested for identity, purity and adulteration to assure the highest quality.

Quality Tested & Packaged by: NOW® Research, Inc. 60108, USA. Botanical: Cedrus atlantica. Certified Organic by QAI.

7 33739 107398 4 3

Code 7398 V1

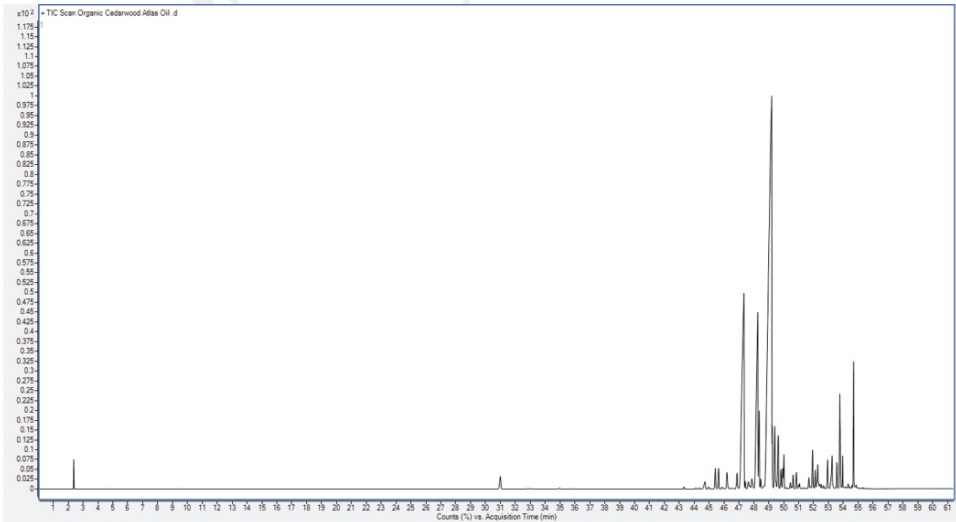
INCI NAME: *Cedrus atlantica*
Plant Part: Wood
Processing: Steam Distillation

PHYSICAL CHARACTERISTICS

Specific Gravity: 0.925 – 0.945
Refractive Index: 1.506 – 1.513

Gas Chromatogram

CHEMICAL CHARACTERISTICS



Balsam Fir Needle



Suggested Use: For aromatherapy use. For all other uses, carefully dilute with a carrier oil such as jojoba, grapeseed, olive, or almond oil prior to use. Please consult an essential oil book or other professional reference source for suggested dilution ratios.

Natural essential oils are highly concentrated and should be used with care.

Caution: Keep out of reach of children. Avoid contact with eyes. If pregnant or lactating, consult your healthcare practitioner before using. Not for internal use.

now® essential oils

100% pure
balsam fir needle
Abies balsamea
Net 1 fl. oz. (30 mL)

Ingredients: 100% pure balsam fir needle oil.

Aroma: Pleasant, woody.

Benefits: Empowering, balancing, strengthening.

Mixes Well With: frankincense oil, myrrh oil, pine oil, sandalwood oil blend.

Extraction Method: Steam Distilled from *Abies balsamea* needles.

Purity Tested/Quality Assured

Manufactured by NOW Foods
www.nowfoods.com
Code 7913

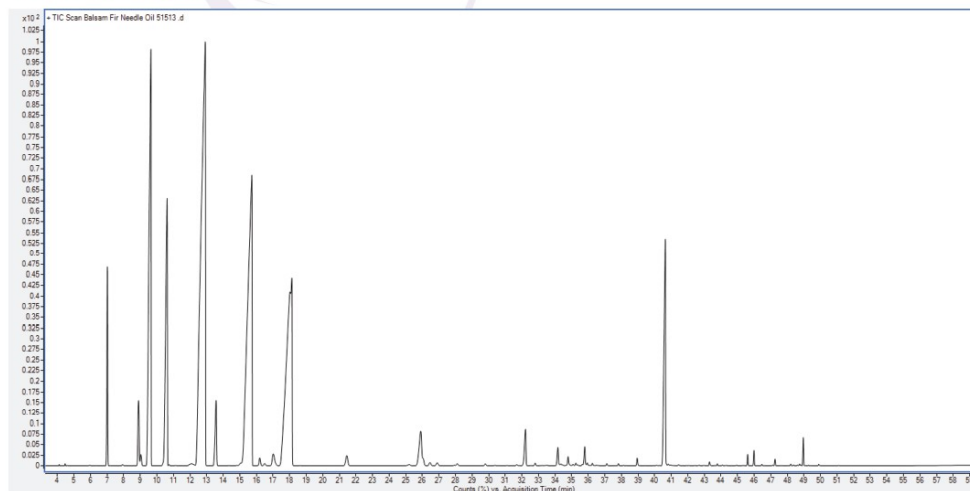
INCI NAME: *Abies balsamea*
Plant Part: Needles
Processing: Steam Distillation

PHYSICAL CHARACTERISTICS

Specific Gravity: 0.872 – 0.878
Refractive Index: 1.473 – 1.476

Gas Chromatogram

CHEMICAL CHARACTERISTICS



Basil



Suggested Use: For aromatherapy use. For all other uses, carefully dilute with a carrier oil such as jojoba, grapeseed, olive, or almond oil prior to use. Please consult an essential oil book or other professional reference source for suggested dilution ratios.

Natural essential oils are highly concentrated and should be used with care.

Caution: Keep out of reach of children. Avoid contact with eyes. If pregnant or lactating, consult your healthcare practitioner before using. Not for internal use.

100% pure basil
Ocimum basilicum
Net 1 fl. oz. (30 mL)

Ingredients: 100% pure basil oil.

Aroma: Warm, spicy.

Benefits: Uplifting, energizing, purifying.

Wake Up & Focus Blend: Add 1 drop of basil oil, 2 drops each of lemon oil and ylang ylang oil to a diffuser and enjoy.

Extraction Method: Steam Distilled from plant's leaves.

Purity Tested/Quality Assured

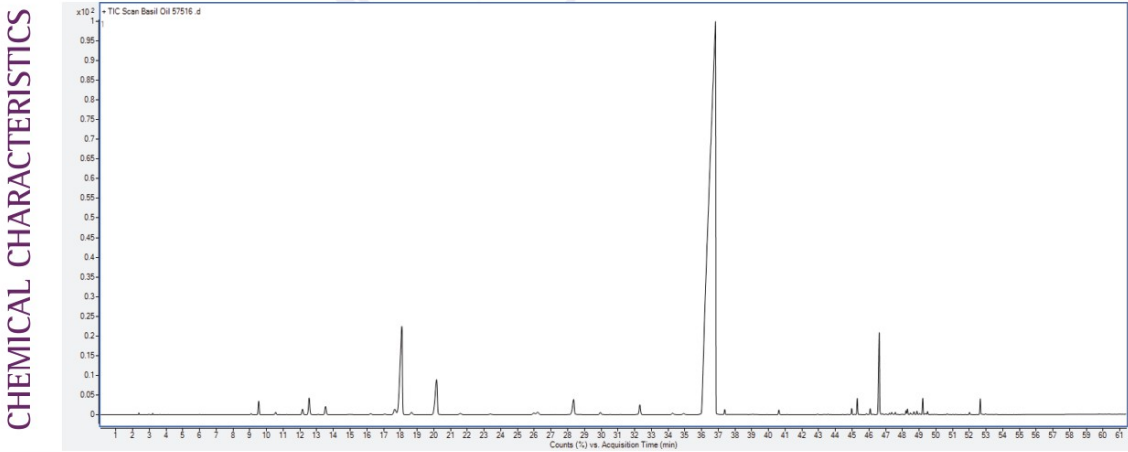
Manufactured by NOW Foods
www.nowfoods.com
7 333907516 1
Code 7916

INCI NAME: *Ocimum basilicum*
Plant Part: Flowering top or entire plant (leaves & twigs)
Processing: Steam Distillation

PHYSICAL CHARACTERISTICS

Specific Gravity: 0.952 – 0.973
Refractive Index: 1.512 – 1.520
Optical Rotation: –2 to +2 DEG

Gas Chromatogram



Bergamot



Suggested Use: For aromatherapy use. For all other uses, carefully dilute with a carrier oil such as jojoba, grapeseed, olive, or almond oil prior to use. Please consult an essential oil book or other professional reference source for suggested dilution ratios.

Natural essential oils are highly concentrated and should be used with care.

Caution: Keep out of reach of children. Avoid contact with eyes. If pregnant or nursing, consult your healthcare practitioner before using. Do not use on skin. Reacts strongly to sunlight and other sources of ultraviolet light.



Ingredient: 100% pure bergamot oil.

Aroma: Sweet, fruity.

Attributes: Lively, inspiring, uplifting.

Mixes Well With: cedarwood oil, tangerine oil, chamomile oil.

Extraction Method: Cold Pressed from fresh fruit peel.

NOW® Essential Oils are analytically tested for identity, purity and adulteration to assure the highest quality.

Quality Tested by: K. Paragat for: NOW Foods, Inc., 2355 Central Expressway, Fremont, CA 94538, USA. Manufactured in the USA.

Code 7516 v3

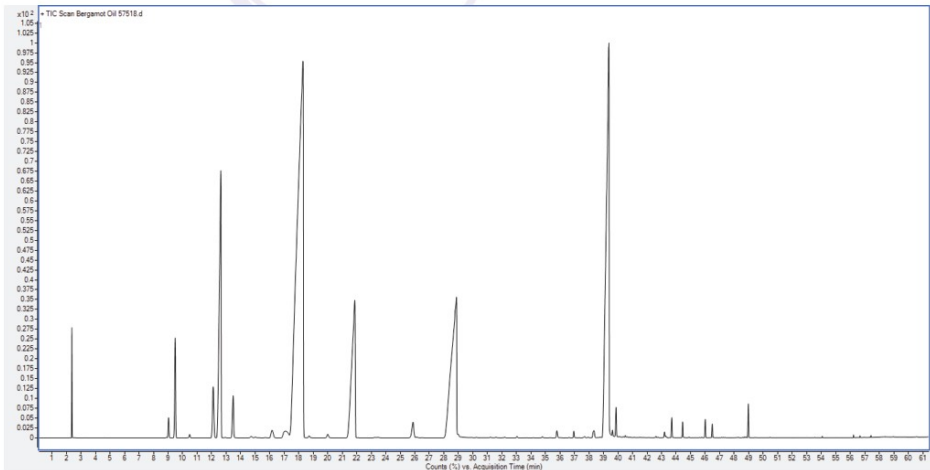
INCI NAME: *Citrus bergamia*
Plant Part: Fresh fruit peel
Processing: Cold Pressed

PHYSICAL CHARACTERISTICS

Specific Gravity: 0.871 – 0.879
Refractive Index: 1.465 – 1.468

Gas Chromatogram

CHEMICAL CHARACTERISTICS



ORGANIC
Bergamot



Suggested Use: For aromatherapy use. For all other uses, carefully dilute with a carrier oil such as jojoba, grapeseed, olive, or almond oil prior to use. Please consult an essential oil book or other professional reference source for suggested dilution ratios.

Natural essential oils are highly concentrated and should be used with care.

Caution: Keep out of reach of children. Avoid contact with eyes. If pregnant or nursing, consult your healthcare practitioner before using. Do not use on skin. Reacts strongly to sunlight and other sources of ultraviolet light.

certified organic & 100% pure
bergamot
Citrus bergamia
1 fl. oz. (30 mL)
USDA Organic

Ingredient: Organic bergamot oil (100% pure).

Aroma: Sweet, fruity, citrus.

Attributes: Lively, inspiring, uplifting.

Mixes Well With: cedarwood oil, tangerine oil, chamomile oil.

Extraction Method: Cold Pressed from fruit peel.

Purity Tested/Quality Assured

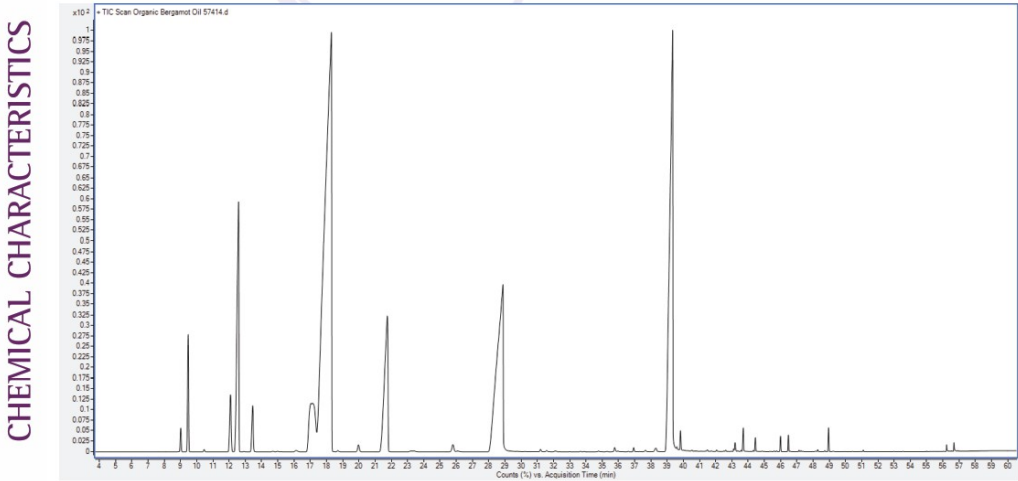
NOW Foods
Bloomington, IL 61810, USA
Certified Organic by U.S.A.
7 33739 07414 6
Code 7414 v1

INCI NAME: *Citrus bergamia*
Plant Part: Fresh fruit peel
Processing: Cold Pressed

PHYSICAL CHARACTERISTICS

Specific Gravity: 0.865 – 0.883
Refractive Index: 1.464 – 1.469
Optical Rotation: +15 to +34 DEG

Gas Chromatogram



Black Pepper



Suggested Use: For aromatherapy use. For all other uses, carefully dilute with a carrier oil such as jojoba, grapeseed, olive, or almond oil prior to use. Please consult an essential oil book or other professional reference source for suggested dilution ratios.

Natural essential oils are highly concentrated and should be used with care.

Caution: Keep out of reach of children. Avoid contact with eyes. If pregnant or nursing, consult your healthcare practitioner before using.

100% pure
black
pepper

Piper nigrum
1 fl. oz. (30 mL)

Ingredient: 100% pure black pepper oil.

Aroma: Dry, spicy, sharp.

Attributes: Warming, stimulating, focusing, cleansing.

Mixes Well With: Geranium, lavender, frankincense, clary sage, sandalwood, citrus and spice oils.

Extraction Method: Steam distilled from dried unripe berries.

Purity Tested/Quality Assured

NOW Foods
Bloomington, IL 61818, USA
nowfoods.com/essentialoils

33739107416

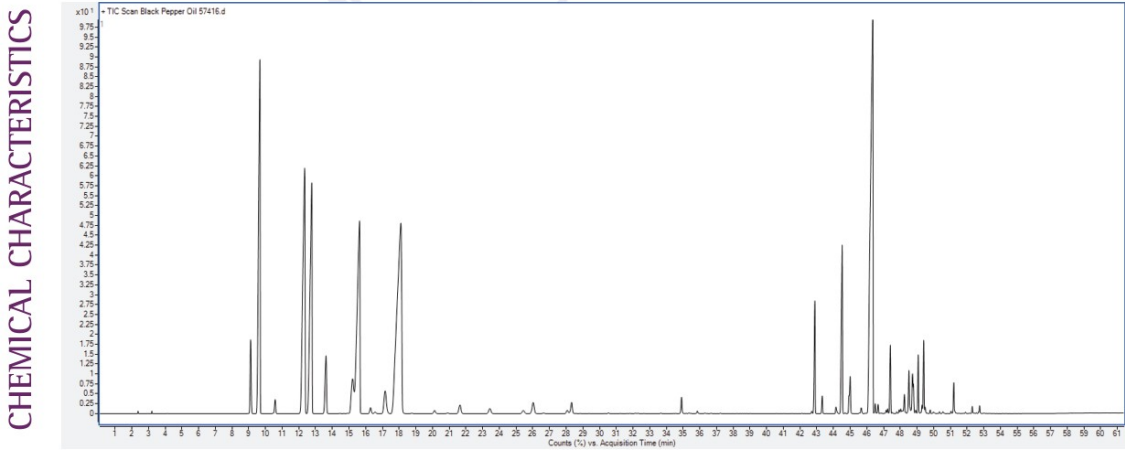
Code 7416 v1

INCI NAME: *Piper nigrum*
Plant Part: Dried, unripe berries
Processing: Steam Distillation

PHYSICAL CHARACTERISTICS

Specific Gravity: 0.864 – 0.884
Refractive Index: 1.479 – 1.488
Optical Rotation: –23 to –1 DEG

Gas Chromatogram



Blue Tansy



Suggested Use: This blend is pre-diluted and ready for use. Please consult an essential oil book or other professional source for suggested uses.

Natural essential oils should be handled with care.
Essential oils blended with carrier oils may clog diffusers; please clean thoroughly after each use.

Caution: Keep out of reach of children. Avoid contact with eyes. If pregnant or nursing, consult your health-care practitioner before using.
Not for internal use.



blue tansy
10% oil blend
Tanacetum annuum
1 fl. oz. (30 mL)

Ingredients: Organic, Simmondsia Chinensis (Jojoba) Oil & Tanacetum Annuum (Blue Tansy) Oil.

Aroma: Sweet, fresh, herbaceous.

Attributes: Soothing, calming.

Mixes Well With: clary sage, geranium, juniper berry, lavender, spearmint, ylang ylang.

Extraction Method: Steam Distilled from aerial parts.

NOW® Essential Oils are analytically tested for identity, purity and adulteration to assure the highest quality.

Manufactured & Quality Tested by:
NOW Foods, Inc.
Bloomington, IL 61818, USA
nowfoods.com/essential-oils
437739107475
Code 7475

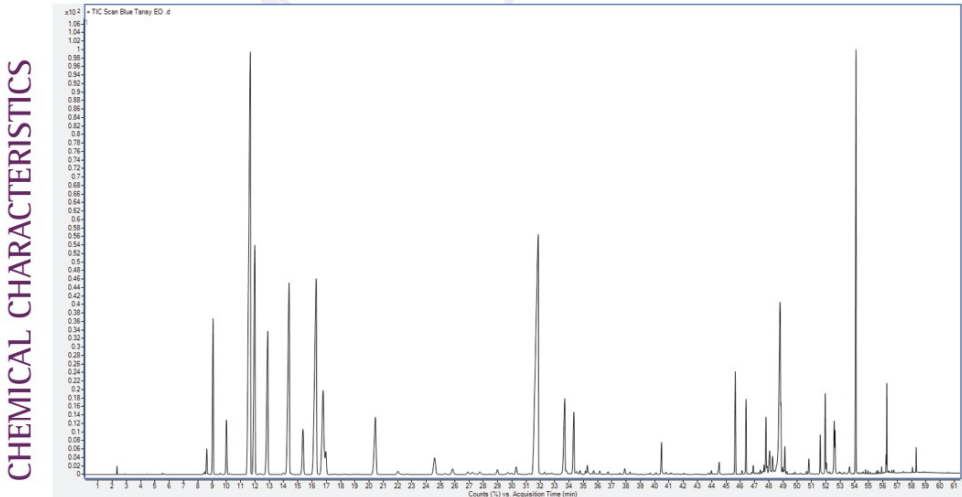
INCI NAME: Tanacetum annuum
Plant Part: Aerial parts
Processing: Steam Distillation

NOTE: Physical parameters and chromatogram is for pure blue tansy essential oil.

TYPICAL PHYSICAL CHARACTERISTICS

Specific Gravity: 0.877 – 0.925
Refractive Index: 1.465 – 1.525

Typical Gas Chromatogram



CHEMICAL CHARACTERISTICS

Camphor



Suggested Use: For aromatherapy use. For all other uses, carefully dilute with a carrier oil such as jojoba, grapeseed, olive, or almond oil prior to use. Please consult an essential oil book or other professional reference source for suggested dilution ratios.

Natural essential oils are highly concentrated and should be used with care.

Caution: Keep out of reach of children. Avoid contact with eyes. If pregnant or lactating, consult your healthcare practitioner before using. Not for internal use.

100% pure
camphor
Cinnamomum camphora
Net 1 fl. oz. (30 mL)

Ingredients: 100% pure camphor oil.

Aroma: Penetrating, medicinal.

Benefits: Purifying, energizing, invigorating.

Mixes Well With: cinnamon oil, frankincense oil, rosemary oil.

Extraction Method: Fractional distillation of crude decamphorized oil.

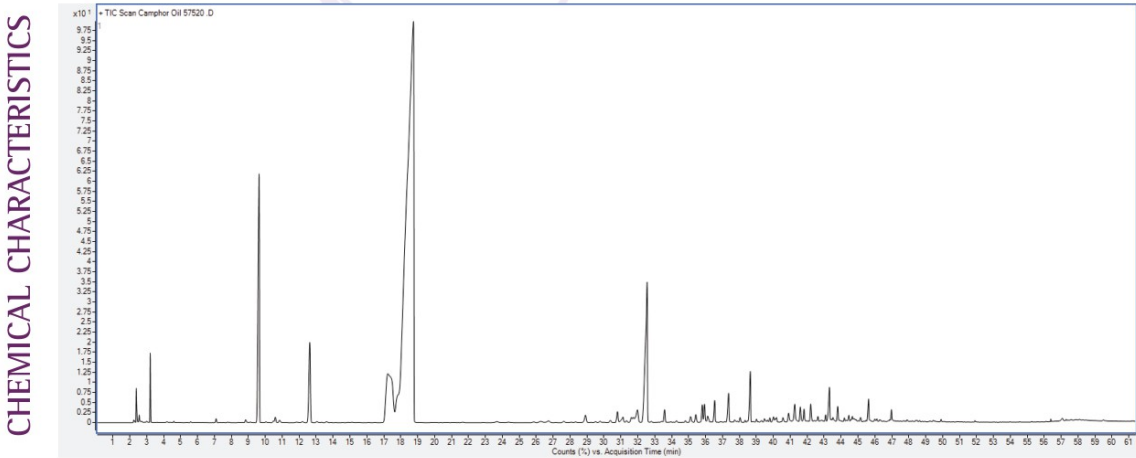
Purity Tested/Quality Assured

Manufactured by NOW Foods
www.nowfoods.com
Code 7929

INCI NAME: *Cinnamomum camphora*
Plant Part: Wood
Processing: Fractional Distillation

PHYSICAL CHARACTERISTICS
Specific Gravity: 0.855 – 0.895
Refractive Index: 1.461–1.471

Gas Chromatogram



Cardamom



Suggested Use: For aromatherapy use. For all other uses, carefully dilute with a carrier oil such as jojoba, grapeseed, olive, or almond prior to use. Please consult an essential oil book or other professional reference source for suggested dilution ratios.

Natural essential oils are highly concentrated and should be used with care.

100% pure cardamom
Elettaria cardamomum
1/3 fl. oz. (10 mL)

Ingredient: *Elettaria Cardamomum* (Cardamom) Oil.
Aroma: Spicy, warm.
Extraction Method: Steam Distilled from seeds.

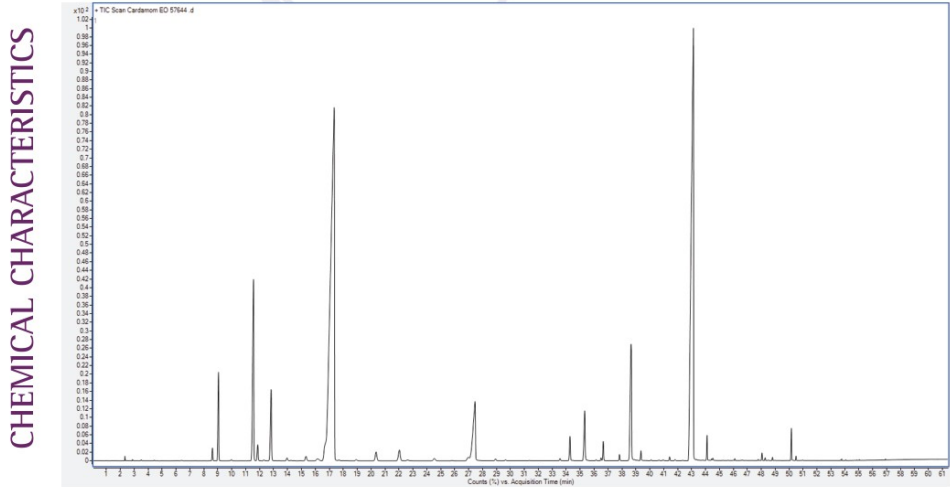
Caution: Keep out of reach of children. Avoid contact with eyes. If pregnant or nursing, consult your healthcare practitioner before using.

Quality Tested by & Packaged for:
NOW Foods
Bloomington, IL 61710, USA
nowfoods.com/essential-oils
Packaged in the USA.

INCI NAME: *Elettaria cardamomum*
Plant Part: Seeds
Processing: Steam Distillation

PHYSICAL CHARACTERISTICS
Specific Gravity: 0.917 – 0.947
Refractive Index: 1.462 – 1.466
Optical Rotation: +22 to +44 DEG

Gas Chromatogram



Carrot Seed



Suggested Use: For aromatherapy and topical use. A wonderful, skin-rejuvenating essential oil, carrot seed oil helps balance both oily and dry complexions, helps to nourish skin, and is extremely beneficial for mature or environmentally stressed skin. Please dilute with a carrier oil (such as jojoba, grapeseed, almond) or moisturizer. Suggested dilution: 2-3 drops of carrot seed oil per 1 teaspoon of carrier oil or moisturizer.

Caution: Keep out of reach of children. Avoid contact with eyes. If pregnant or nursing, consult your health-care practitioner before using.

Not for internal use.

100% pure carrot seed oil
Daucus carota
1 fl. oz. (30 mL)

Ingredient:
Daucus Carota (Carrot) Seed Oil.

Aroma: Earthy, woody, sweet.

Attributes: Soothing, rejuvenating, grounding.

Mixes Well With:
Citrus oils, cedarwood, lavender, geranium.

Extraction Method:
Steam distilled from seeds.

NOW® Essential Oils are analytically tested for identity, purity and adulteration to assure the highest quality.

Natural essential oils are highly concentrated and should be used with care.

Quality Tested & Packaged by: NOW Foods, Inc. 2355 Central Expressway, Fremont, CA 94538, USA. www.nowfoods.com

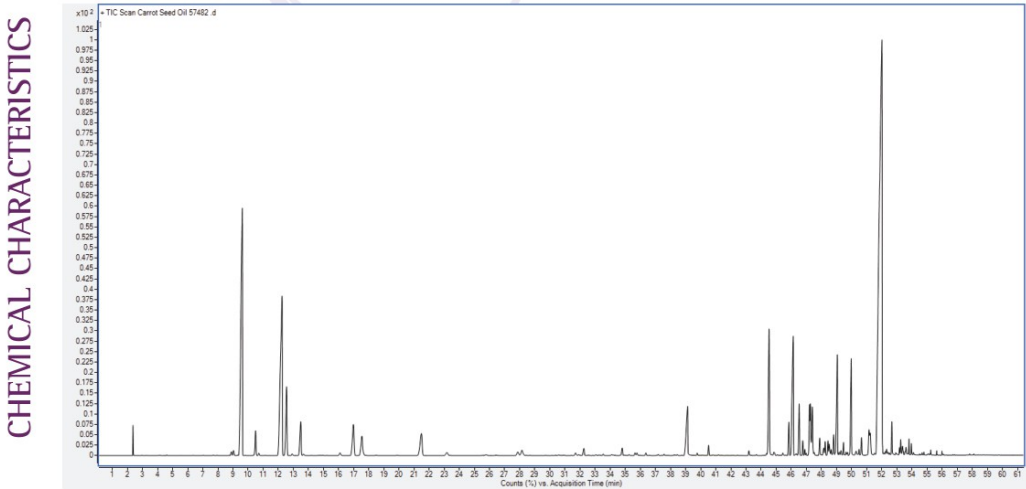
Code 7482

INCI NAME: *Daucus carota (subspecies sativa)*
Plant Part: Seeds
Processing: Steam Distillation

TYPICAL PHYSICAL CHARACTERISTICS

Specific Gravity: 0.900 - 0.943
Refractive Index: 1.483 - 1.493
Optical Rotation: -30 to -4 DEG

Typical Gas Chromatogram



Cedarwood



Suggested Use: For aromatherapy use. For all other uses, carefully dilute with a carrier oil such as jojoba, grapeseed, olive, or almond oil prior to use. Please consult an essential oil book or other professional reference source for suggested dilution ratios.

Natural essential oils are highly concentrated and should be used with care.

Caution: Keep out of reach of children. Avoid contact with eyes. If pregnant or lactating, consult your healthcare practitioner before using. Not for internal use.

100% pure cedarwood
Juniperus virginiana
Net 1 fl. oz. (30 mL)

Ingredients: 100% pure cedarwood oil.

Aroma: Warm, woody, balsamic.

Attributes: Soothing, strengthening, empowering.

Breathe Deep Blend: Add 1 drop each of cedarwood oil and pine oil, along with 5 drops each of eucalyptus oil and hyssop oil to a diffuser and enjoy.

Extraction Method: Steam Distilled from Virginian Cedarwood trees.

Purity Tested/Quality Assured

Code 7525 V3

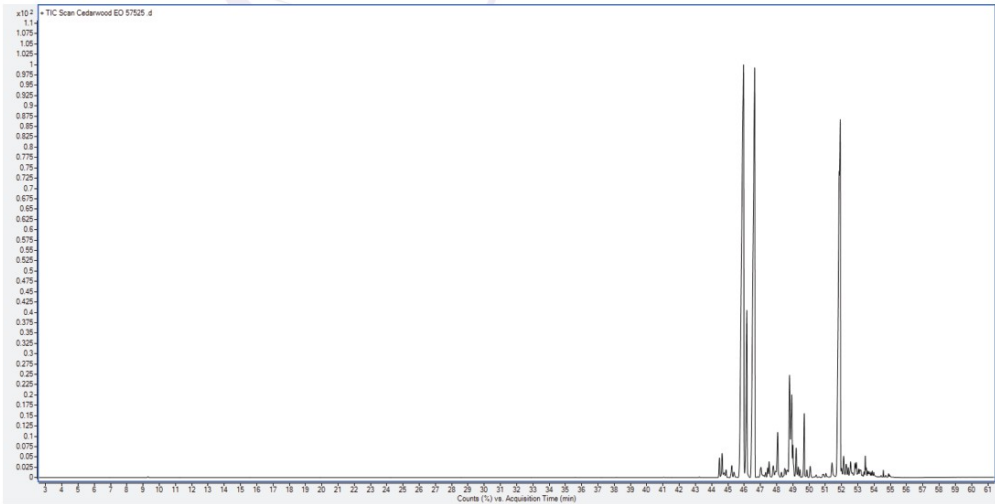
INCI NAME: *Juniperus virginiana*
Plant Part: Wood
Processing: Steam Distillation

PHYSICAL CHARACTERISTICS

Specific Gravity: 0.938 – 0.964
Refractive Index: 1.500 – 1.507

Gas Chromatogram

CHEMICAL CHARACTERISTICS



Chamomile



Suggested Use: For aromatherapy use. For all other uses, carefully dilute with a carrier oil such as jojoba, grapeseed, olive, or almond oil prior to use. Please consult an essential oil book or other professional reference source for suggested dilution ratios.

Natural essential oils are highly concentrated and should be used with care.

Caution: Keep out of reach of children. Avoid contact with eyes. If pregnant or lactating, consult your healthcare practitioner before using. **Not for internal use.**

100% pure
chamomile
Anthemis nobilis
1 fl. oz. (30 mL)

Ingredient: 100% pure chamomile oil (Roman).

Aroma: Intense sweet, delightful.

Attributes: Relaxing, calming, revitalizing.

Unwind Time Blend: Add 1 drop of chamomile oil and 2 drops each of lavender oil and sandalwood oil blend to a diffuser and enjoy.

Extraction Method: Steam Distilled from plant's flowers.

Purity Tested/Quality Assured

NOW Foods
Bloomington, IL 61810, USA
4 non-GMO ingredients

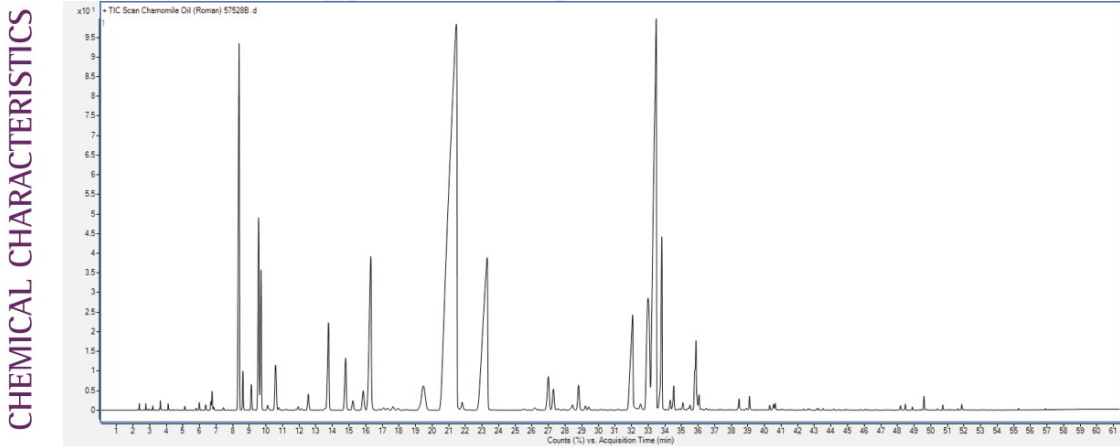
Code 75288 v4

INCI NAME: *Anthemis nobilis*
Plant Part: Flowering tops
Processing: Steam Distillation

PHYSICAL CHARACTERISTICS

Specific Gravity: 0.892 – 0.910
Refractive Index: 1.440 – 1.450

Gas Chromatogram



Cinnamon Bark



Suggested Use: For aromatherapy use. For all other uses, carefully dilute with a carrier oil such as jojoba, grapeseed, olive, or almond oil prior to use. Please consult an essential oil book or other professional reference source for suggested dilution ratios.

Natural essential oils are highly concentrated and should be used with care.

Caution: Keep out of reach of children. Avoid contact with eyes. If pregnant or nursing, consult your healthcare practitioner before using. Do not use on skin.

100% pure
cinnamon bark
Cinnamomum zeylanicum
1 fl. oz. (30 mL)

Ingredient: 100% pure cinnamon bark oil.

Aroma: Warm, spicy.

Attributes: Warming, comforting, energizing.

Mixes Well With: clove oil, nutmeg oil, vanilla blend oil, cinnamon cassia oil.

Extraction Method: Steam Distilled from plant's dried inner bark.

Purity Tested/Quality Assured

NOW Foods
Bloomington, IL 61818, USA
© 2022 nowfoods.com

7 53739 07333 8

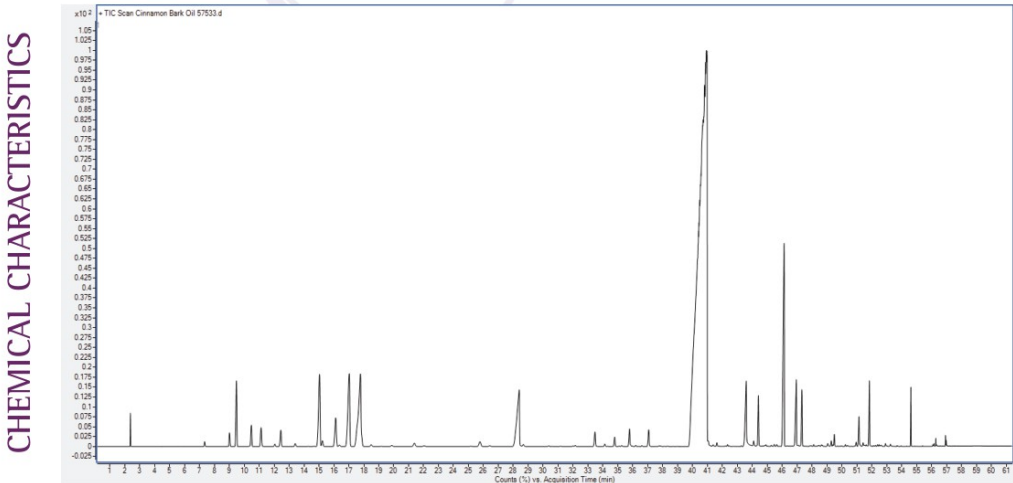
Code 7533 vs

INCI NAME: Cinnamomum zeylanicum
Plant Part: Dried inner bark
Processing: Steam Distillation

PHYSICAL CHARACTERISTICS

Specific Gravity: 1.010 – 1.030
Refractive Index: 1.573 – 1.591
Optical Rotation: -2 to 0 DEG

Gas Chromatogram



Cinnamon Cassia



Suggested Use: For aromatherapy use. For all other uses, carefully dilute with a carrier oil such as jojoba, grapeseed, olive, or almond oil prior to use. Please consult an essential oil book or other professional reference source for suggested dilution ratios.

Natural essential oils are highly concentrated and should be used with care.

Caution: Keep out of reach of children. Avoid contact with eyes. If pregnant or nursing, consult your healthcare practitioner before using. Do not use on skin.

100% pure cinnamon cassia
Cinnamomum cassia
1 fl. oz. (30 mL)

Ingredient: 100% pure cinnamon cassia oil.
Aroma: Warm, spicy.
Attributes: Warming, stimulating, refreshing.
Mixes Well With: frankincense oil, hyssop oil, myrrh oil, cinnamon bark oil.

Extraction Method: Steam Distilled from plant's leaves and twigs. NOW® Essential Oils are analytically tested for identity, purity and adulteration to assure the highest quality.

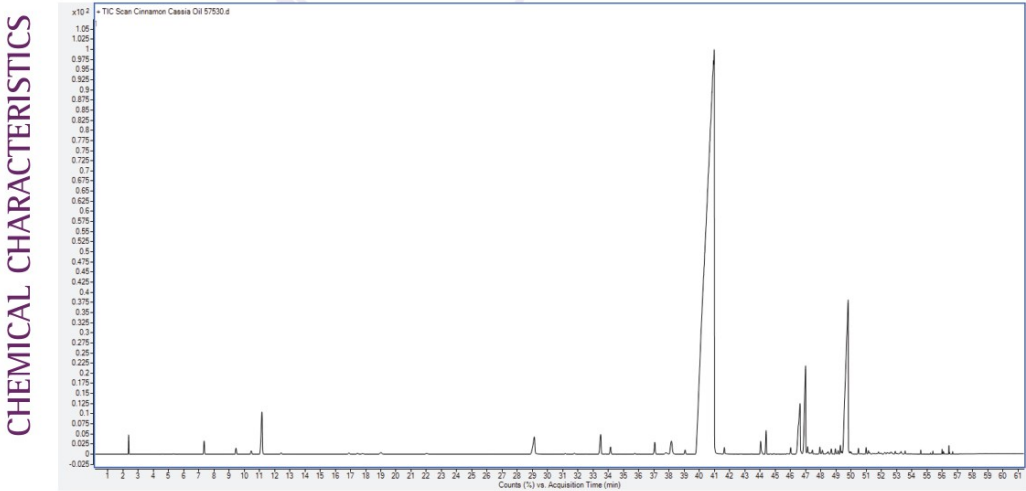
Code 7530 v7

INCI NAME: *Cinnamomum cassia*
Plant Part: Leaves, twigs, and bark
Processing: Steam Distillation

TYPICAL PHYSICAL CHARACTERISTICS

Specific Gravity: 1.045 – 1.063
Refractive Index: 1.602 – 1.614
Optical Rotation: –1 to +1 DEG

Typical Gas Chromatogram



ORGANIC
Cinnamon Cassia



Suggested Use: For aromatherapy use. For all other uses, carefully dilute with a carrier oil such as jojoba, grapeseed, olive, or almond oil prior to use. Please consult an essential oil book or other professional reference source for suggested dilution ratios.

Natural essential oils are highly concentrated and should be used with care.

Caution: Keep out of reach of children. Avoid contact with eyes. If pregnant or nursing, consult your healthcare practitioner before using. Do not apply undiluted oil to skin.

certified organic & 100% pure
cinnamon cassia
Cinnamomum cassia
1 fl. oz. (30 mL)

Ingredient: Organic cinnamon cassia oil (100% pure).

Aroma: Warm, spicy.

Attributes: Warming, stimulating, refreshing.

Mixes Well With: frankincense oil, hyssop oil, myrrh oil, cinnamon bark oil.

Extraction Method: Steam Distilled from leaves and twigs.

NOW® Essential Oils are analytically tested for identity, purity and adulteration to assure the highest quality.

Quality Tested & Packaged by: Bio-Organic, Inc. 60108, USA. Botanical: Cinnamomum cassia. Certified Organic by QAI.

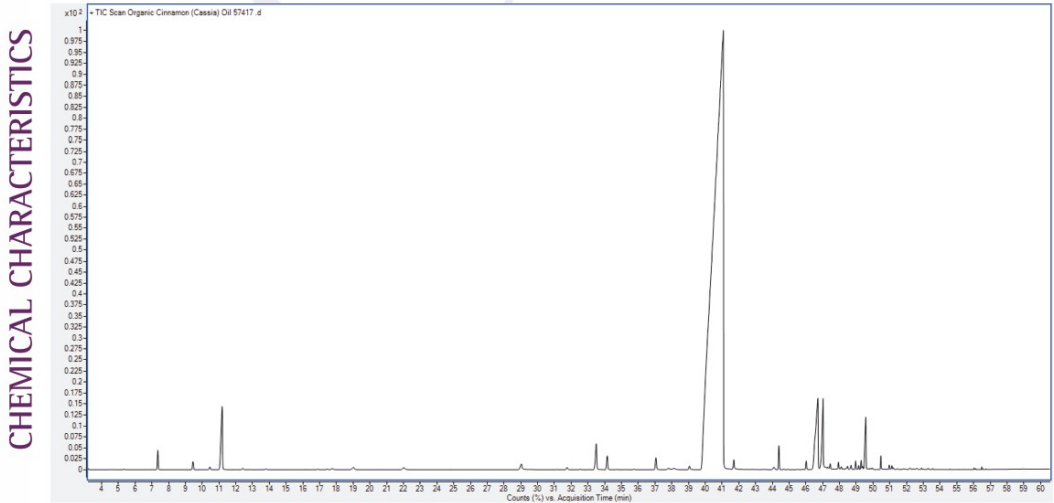
Code 7417 v1

INCI NAME: *Cinnamomum cassia*
Plant Part: Leaves and twigs
Processing: Steam Distillation

PHYSICAL CHARACTERISTICS

Specific Gravity: 1.045 – 1.063
Refractive Index: 1.600 – 1.650
Angular Rotation: -2 to +2 DEG

Gas Chromatogram



Citronella



Suggested Use: For aromatherapy use. For all other uses, carefully dilute with a carrier oil such as jojoba, grapeseed, olive, or almond oil prior to use. Please consult an essential oil book or other professional reference source for suggested dilution ratios.

Natural essential oils are highly concentrated and should be used with care.

Caution: Keep out of reach of children. Avoid contact with eyes. If pregnant or lactating, consult your healthcare practitioner before using. Not for internal use.



100% pure
citronella
Cymbopogon winterianus
Net 1 fl. oz. (30 mL)

Ingredients: 100% pure citronella oil.

Aroma: Pungent, musky, citrus-like.

Benefits: Clarifying, freshening, purifying.

Mixes Well With: cedarwood oil, lavender oil, lemon oil, lemongrass oil.

Extraction Method: Steam Distilled from fresh and dried citronella grass.

Purity Tested/Quality Assured

Manufactured by NOW Foods
Bloomington, IL 61808, U.S.A.
www.nowfoods.com

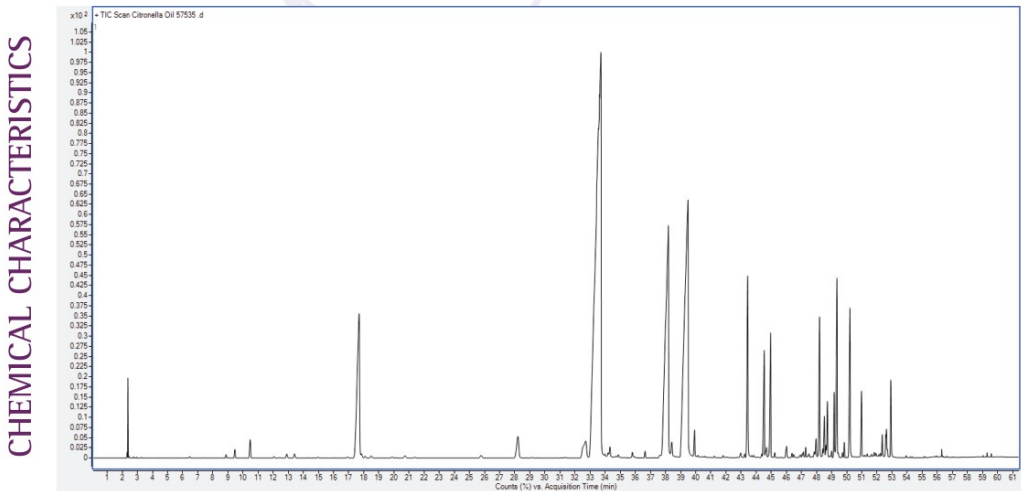
7 3339 07555 2
Code 7535

INCI NAME: *Cymbopogon winterianus*
Plant Part: Dried grass
Processing: Steam Distillation

PHYSICAL CHARACTERISTICS

Specific Gravity: 0.878 – 0.895
Refractive Index: 1.466 – 1.475

Gas Chromatogram



Clary Sage



Suggested Use: For aromatherapy use. For all other uses, carefully dilute with a carrier oil such as jojoba, grapeseed, olive, or almond prior to use. Please consult an essential oil book or other professional reference source for suggested dilution ratios.

Natural essential oils are highly concentrated and should be used with care.

Caution: Keep out of reach of children. Avoid contact with eyes. If pregnant or nursing, consult your healthcare practitioner before using. **Not for internal use.**



Ingredient: Salvia Sclarea (Clary Sage) Oil

Aroma: Herbaceous, lavender-like.

Attributes: Focusing, stimulating, balancing.

Refresh Yourself Blend:
1 drop clary sage oil
1 drop lemon oil
1 drop ginger oil

Extraction Method: Steam Distilled from arial parts.

NOW® Essential Oils are analytically tested for identity, purity and adulteration to assure the highest quality.

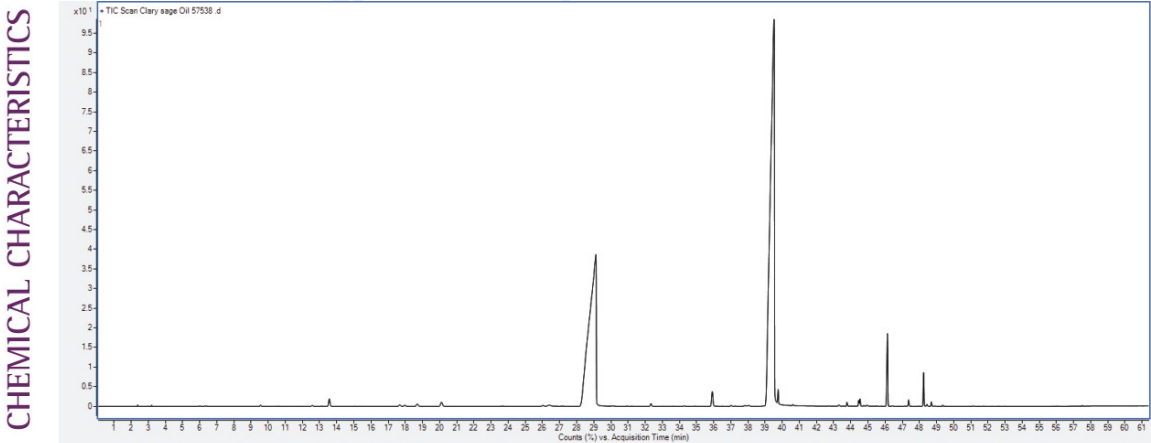
Quality Tested & Packaged by: NOW Foods, Inc. Bloomington, IL 61818, USA
nowfoods.com/essentialoils

INCI NAME: *Salvia sclarea*
Plant Part: Aerial parts
Processing: Steam Distillation

PHYSICAL CHARACTERISTICS

Specific Gravity: 0.886 – 0.929
Refractive Index: 1.458 – 1.473
Optical Rotation: -20 to -6 DEG

Gas Chromatogram



Clove



Suggested Use: For aromatherapy use. For all other uses, carefully dilute with a carrier oil such as jojoba, grapeseed, olive, or almond oil prior to use. Please consult an essential oil book or other professional reference source for suggested dilution ratios.

Natural essential oils are highly concentrated and should be used with care.

Caution: Keep out of reach of children. Avoid contact with skin or eyes. If pregnant or nursing, consult your healthcare practitioner before using. **Not for internal use.**

now®
essential oils



100% pure
clove
Eugenia caryophyllus
1 fl. oz. (30 mL)

Ingredient: 100% pure clove oil.

Aroma: Warm, pungent.

Attributes: Warming, soothing, comforting.

Blues Relief Blend:
2 drops clove oil
2 drops lemon oil
3 drops orange oil

Extraction Method: Steam Distilled from clove buds, leaves and stems.

NOW® Essential Oils are analytically tested for identity, purity and adulteration to assure the highest quality.

Quality Tested & Packaged by: NOW Foods, Inc., 60118, USA
nowfoods.com/essentialoils

6
7 33739 07540

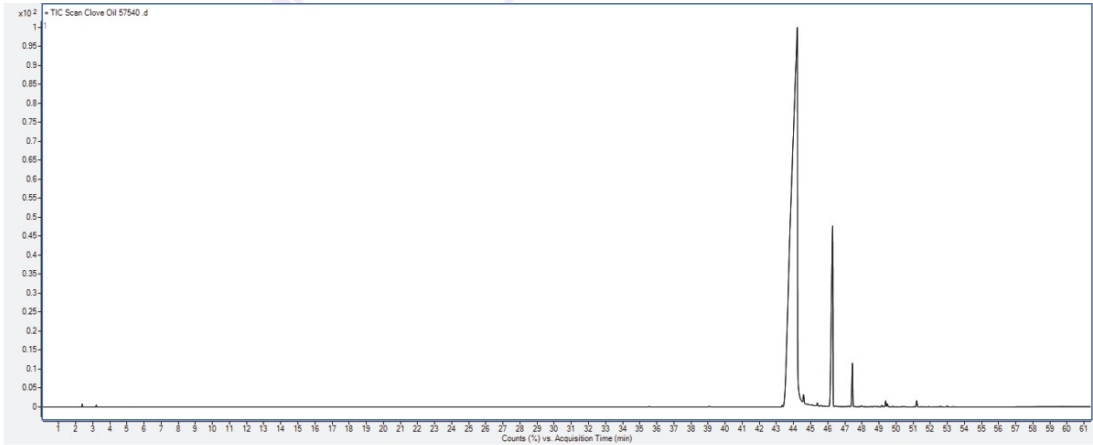
INCI NAME: *Eugenia caryophyllus*
Plant Part: Clove buds, leaves and stems
Processing: Steam Distillation

PHYSICAL CHARACTERISTICS

Specific Gravity: 1.038 – 1.060
Refractive Index: 1.527 – 1.537
Optical Rotation: –1.5 to 0 DEG

Gas Chromatogram

CHEMICAL CHARACTERISTICS



ORGANIC
Clove



Suggested Use: For aromatherapy use. For all other uses, carefully dilute with a carrier oil such as jojoba, grapeseed, olive, or almond oil prior to use. Please consult an essential oil book or other professional reference source for suggested dilution ratios.

Natural essential oils are highly concentrated and should be used with care.

Caution: Keep out of reach of children. Avoid contact with skin or eyes. If pregnant or nursing, consult your healthcare practitioner before using. **Not for internal use.**

now
organic essential oils

certified organic & 100% pure
clove
Eugenia caryophyllus

1 fl. oz. (30 mL)

USDA
Certified Organic

Ingredient: Organic clove oil (100% pure).

Aroma: Warm, pungent.

Attributes: Warming, soothing, comforting.

Beat the Blues Blend: Add 2 drops each of organic clove and organic lemon oils and 3 drops of organic orange oil to a diffuser and enjoy.

Extraction Method: Steam Distilled from organic clove buds.

Purity Tested/Quality Assured

7 3373907408 9

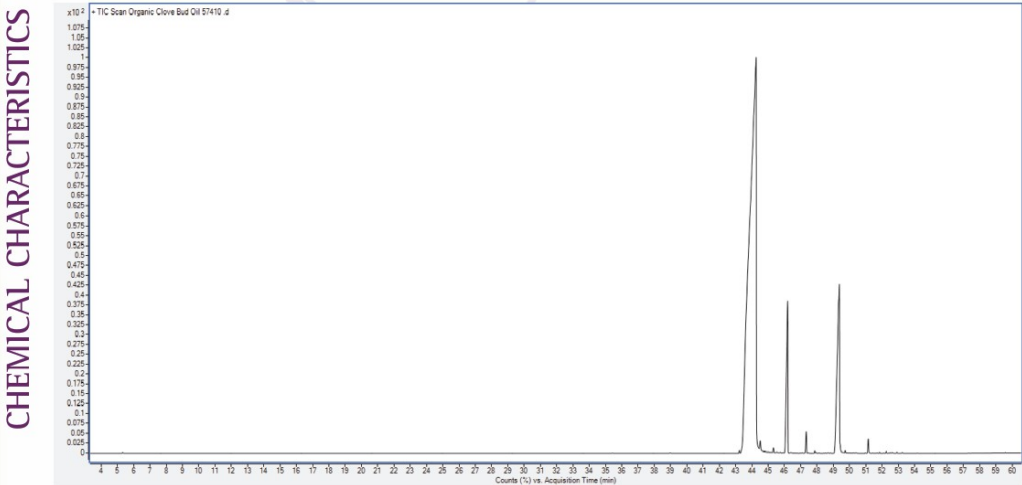
Code 7408 v1

INCI NAME: *Eugenia caryophyllus*
Plant Part: Clove buds
Processing: Steam Distillation

PHYSICAL CHARACTERISTICS

Specific Gravity: 1.038 - 1.060
Refractive Index: 1.527 - 1.535
Optical Rotation: -1.5 to 0 DEG

Gas Chromatogram



Cypress



Suggested Use: For aromatherapy use. For all other uses, carefully dilute with a carrier oil such as jojoba, grapeseed, olive, or almond oil prior to use. Please consult an essential oil book or other professional reference source for suggested dilution ratios.

Natural essential oils are highly concentrated and should be used with care.

Caution: Keep out of reach of children. Avoid contact with eyes. If pregnant or lactating, consult your healthcare practitioner before using. Not for internal use.

100% pure
cypress
Cupressus sempervirens
Net 1 fl. oz. (30 mL)

Ingredients: 100% pure cypress oil.

Aroma: Sweet, balsamic, warm overtones of pine/juniper berry.

Benefits: Balancing, clarifying, centering.

Calming Night Blend: Add 4 drops each of cypress oil, lavender oil and marjoram oil to a diffuser and enjoy.

Extraction Method: Steam Distilled from leaves and branches.

Purity Tested/Quality Assured

Manufactured by NOW Foods
Bloomington, IL 61808, U.S.A.
www.nowfoods.com

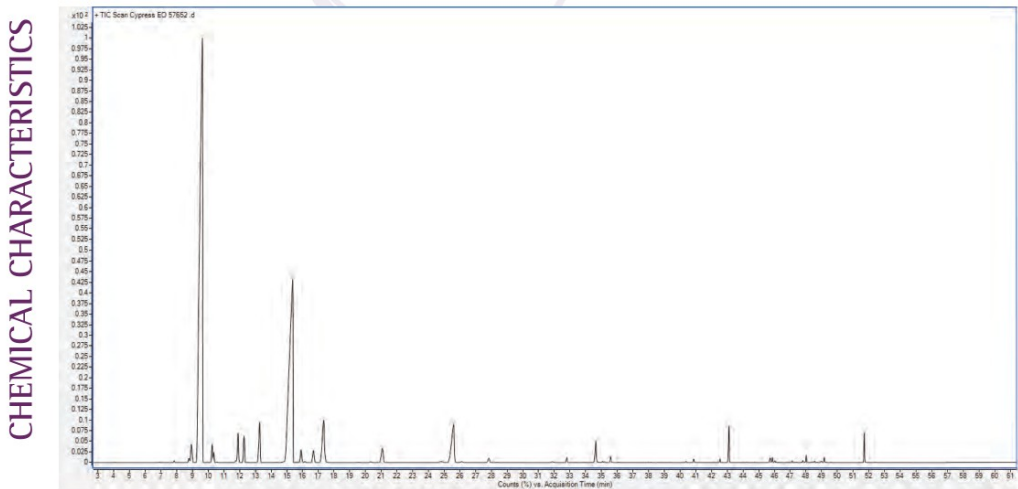
6
33739 07652
7
Code 7652

INCI NAME: *Cupressus sempervirens*
Plant Part: Leaves and branches
Processing: Steam Distillation

PHYSICAL CHARACTERISTICS

Specific Gravity: 0.860 – 0.900
Refractive Index: 1.460 – 1.480

Gas Chromatogram



Eucalyptus



Suggested Use:
For aromatherapy use.
For all other uses, carefully dilute with a carrier oil such as jojoba, grapeseed, olive, or almond oil prior to use. Please consult an essential oil book or other professional reference source for suggested dilution ratios.
Natural essential oils are highly concentrated and should be used with care.
Caution: Keep out of reach of children. Do not apply on children's skin, especially the face, mouth, nose and eyes. Avoid contact with eyes. If pregnant or nursing, consult your healthcare practitioner before using. **Not for internal use.**



Ingredient: 100% pure eucalyptus oil.
Aroma: Strong aromatic, camphoraceous.
Attributes: Revitalizing, invigorating, clarifying.
Clear Thoughts Blend: Add 3 drops of eucalyptus oil, 2 drops each of peppermint oil and tangerine oil to a diffuser and enjoy.
Extraction Method: Steam Distilled from leaves and small branches.
NOW® Essential Oils are analytically tested for identity, purity and adulteration to assure the highest quality.
Code 7545 VS

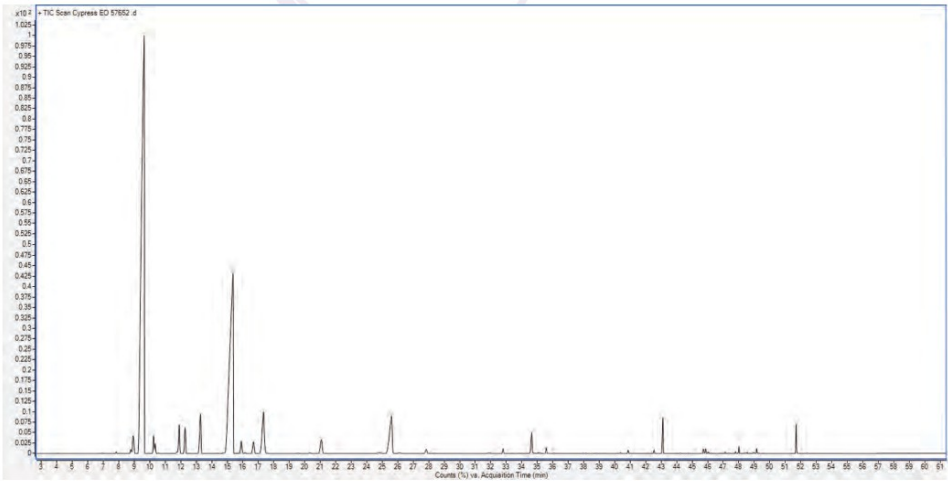
INCI NAME: *Eucalyptus globulus*
Plant Part: Leaves and small branches
Processing: Steam Distillation

PHYSICAL CHARACTERISTICS

Specific Gravity: 0.905 – 0.925
Refractive Index: 1.458 – 1.470
Optical Rotation: 0 to +10 DEG

Gas Chromatogram

CHEMICAL CHARACTERISTICS



ORGANIC
Eucalyptus



Suggested Use: For aromatherapy use. For all other uses, carefully dilute with a carrier oil such as jojoba, grapeseed, olive, or almond prior to use. Please consult an essential oil book or other professional reference source for suggested dilution ratios.

Natural essential oils are highly concentrated and should be used with care.

Caution: Keep out of reach of children. Do not apply on children's skin, especially the face, mouth, nose and eyes. Avoid contact with eyes. If pregnant or nursing, consult your healthcare practitioner before using. **Not for internal use.**

now®
organic essential oils

certified organic & 100% pure
eucalyptus
Eucalyptus globulus

1 fl. oz. (30 mL)

Ingredient:
Organic Eucalyptus Globulus Leaf Oil.

Aroma: Strong aromatic, camphoraceous.

Attributes: Revitalizing, invigorating, clarifying.

Clear Thoughts Blend:
3 drops eucalyptus oil
2 drops peppermint oil
2 drops tangerine oil

Extraction Method:
Steam Distilled from leaves and small branches.

NOW® Essential Oils are analytically tested for identity, purity and adulteration to assure the highest quality.

Code 7410 v4

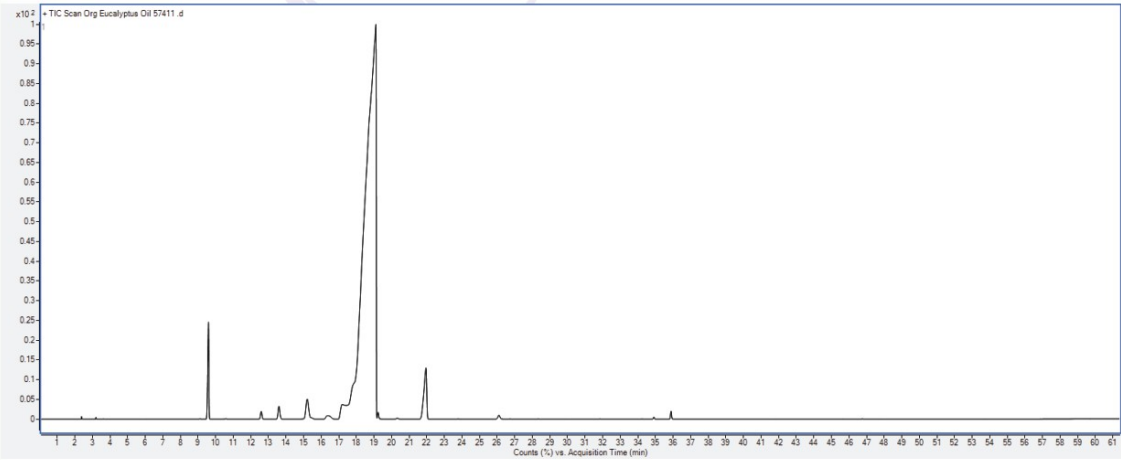
INCI NAME: *Eucalyptus globulus*
Plant Part: Leaves and small branches
Processing: Steam Distillation

TYPICAL PHYSICAL CHARACTERISTICS

Specific Gravity: 0.880 - 0.925
Refractive Index: 1.456 - 1.472
Optical Rotation: -5 to +10 DEG

Typical Gas Chromatogram

CHEMICAL CHARACTERISTICS



Eucalyptus Radiata



Suggested Use:
For aromatherapy use. For all other uses, carefully dilute with a carrier oil such as jojoba, grapeseed, olive, or almond oil prior to use. Please consult an essential oil book or other professional reference source for suggested dilution ratios.

Natural essential oils are highly concentrated and should be used with care.

Caution: Keep out of reach of children. Do not apply on children's skin, especially the face, mouth, nose and eyes. Avoid contact with eyes. If pregnant or nursing, consult your healthcare practitioner before using. **Not for internal use.**

100% pure
eucalyptus
radiata
1 fl. oz. (30 mL)

Ingredient: 100% pure *Eucalyptus radiata* oil.

Aroma: Mildly sweet, fresh.

Attributes: Revitalizing, purifying, clarifying.

Blend Idea: Spring Cleaning: 10 drops of Lemongrass Oil, 5 drops of Lemon Oil, 1 drop of Eucalyptus Oil.

Extraction Method: Steam Distilled from the leaves and twigs.

Purity Tested/Quality Assured

Code 7527 v3

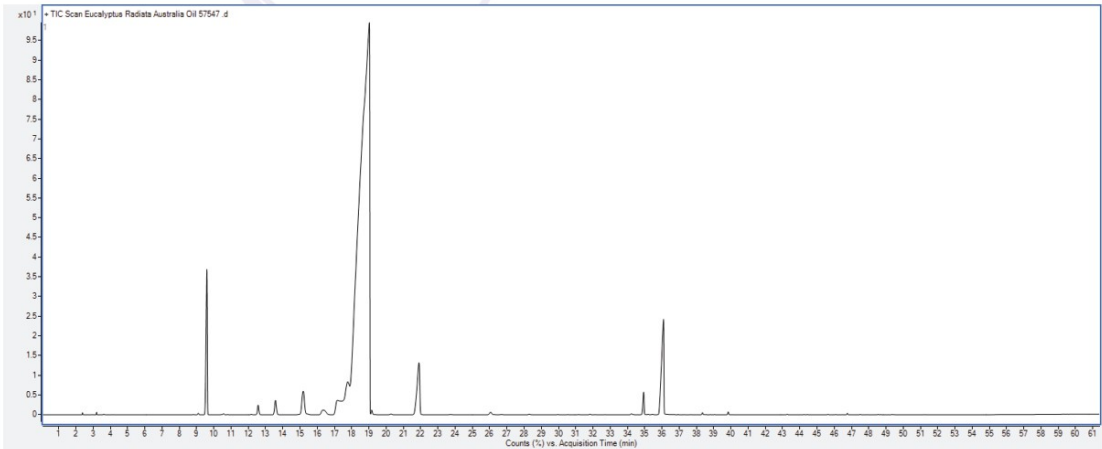
INCI NAME: *Eucalyptus radiata*
Plant Part: Leaves and twigs
Processing: Steam Distillation

PHYSICAL CHARACTERISTICS

Specific Gravity: 0.882 – 0.923
Refractive Index: 1.455 – 1.480

Gas Chromatogram

CHEMICAL CHARACTERISTICS



Frankincense



Suggested Use: For aromatherapy use. For all other uses, carefully dilute with a carrier oil such as jojoba, grapeseed, olive, or almond oil prior to use. Please consult an essential oil book or other professional reference source for suggested dilution ratios.

Natural essential oils are highly concentrated and should be used with care.

Caution: Keep out of reach of children. Avoid contact with eyes. If pregnant or lactating, consult your healthcare practitioner before using. Not for internal use.

now®
essential oils



100% pure
frankincense
Boswellia carterii
Net 1 fl. oz. (30 mL)

Ingredients: 100% pure frankincense oil.

Aroma: Deep, fresh, with subtle hints of citrus and camphor.

Benefits: Relaxing, focusing, centering.

Mixes Well With: balsam fir, needle oil, myrrh oil, orange oil, sandalwood oil blend.

Extraction Method: Steam Distilled from tree resin obtained by exudation of the bark.

Purity Tested/Quality Assured
Code 7542

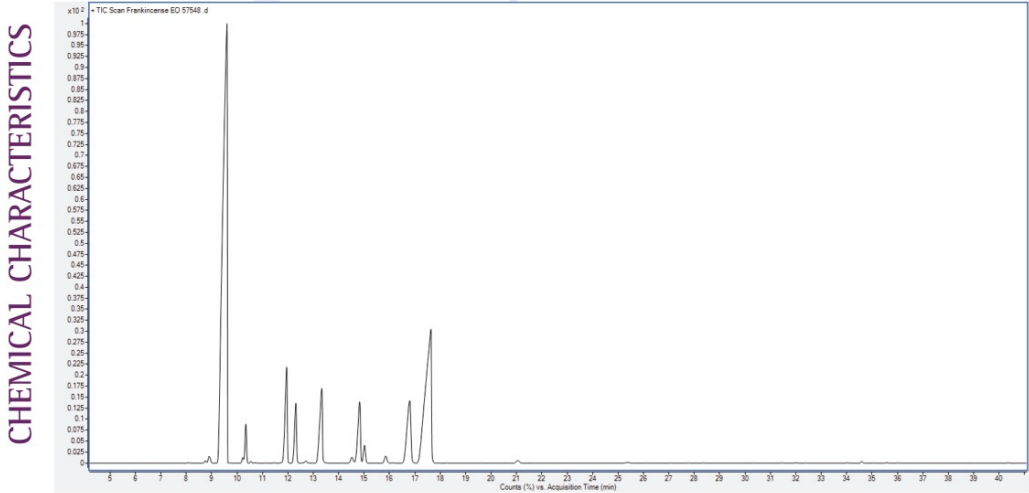
Manufactured by NOW Foods
Bloomington, IL 61818, U.S.A.
www.nowfoods.com

INCI NAME: *Boswellia carterii*
Plant Part: Tree resin obtained by exudation of the bark
Processing: Steam Distillation

PHYSICAL CHARACTERISTICS

Specific Gravity: 0.857 - 0.889
Refractive Index: 1.465 - 1.482
Optical Rotation: -15 to +35 DEG

Gas Chromatogram



Geranium



Suggested Use: For aromatherapy use. For all other uses, carefully dilute with a carrier oil such as jojoba, grapeseed, olive, or almond oil prior to use. Please consult an essential oil book or other professional reference source for suggested dilution ratios.

Natural essential oils are highly concentrated and should be used with care.

Caution: Keep out of reach of children. Avoid contact with eyes. If pregnant or lactating, consult your healthcare practitioner before using. Not for internal use.

100% pure
geranium
Pelargonium graveolens
Net 1 fl. oz. (30 mL)

Ingredients: 100% pure geranium oil.

Aroma: Subtly sweet, floral.

Benefits: Purifying, soothing, normalizing.

Daily Balance Blend: Add 2 drops each of geranium oil, rose absolute oil and clary sage oil to a diffuser and enjoy.

Extraction Method: Steam Distilled from fresh plants.

Purity Tested/Quality Assured

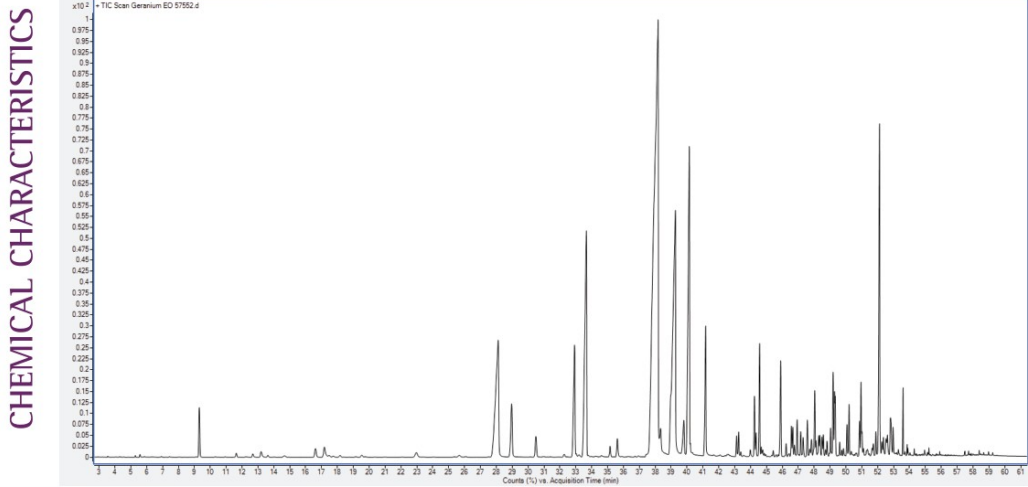
Manufactured by NOW Foods
Bloomington, IL 61818, U.S.A.
www.nowfoods.com

7 3339 07552 9
Code 7552

INCI NAME: *Pelargonium graveolens*
Plant Part: Fresh aerial flowering plant
Processing: Steam Distillation

PHYSICAL CHARACTERISTICS
Specific Gravity: 0.886 – 0.898
Refractive Index: 1.464 – 1.472

Gas Chromatogram



ORGANIC
Geranium



Suggested Use: For aromatherapy use. For all other uses, carefully dilute with a carrier oil such as jojoba, grapeseed, olive, or almond prior to use. Please consult an essential oil book or other professional reference source for suggested dilution ratios.

Natural essential oils are highly concentrated and should be used with care.

Caution: Keep out of reach of children. Avoid contact with eyes. If pregnant or nursing, consult your healthcare practitioner before using. **Not for internal use.**

certified organic & 100% pure
geranium
Pelargonium graveolens
1 fl. oz. (30 mL)

Ingredient: Organic Pelargonium Graveolens (Geranium) Oil (Bourbon Type).

Aroma: Subtly sweet, floral.

Attributes: Purifying, soothing, normalizing.

Mixes Well With: clary sage oil, peppermint oil, rose oil.

Extraction Method: Steam Distilled from aerial parts.

NOW® Essential Oils are analytically tested for identity, purity and adulteration to assure the highest quality.

Code 7418 v1

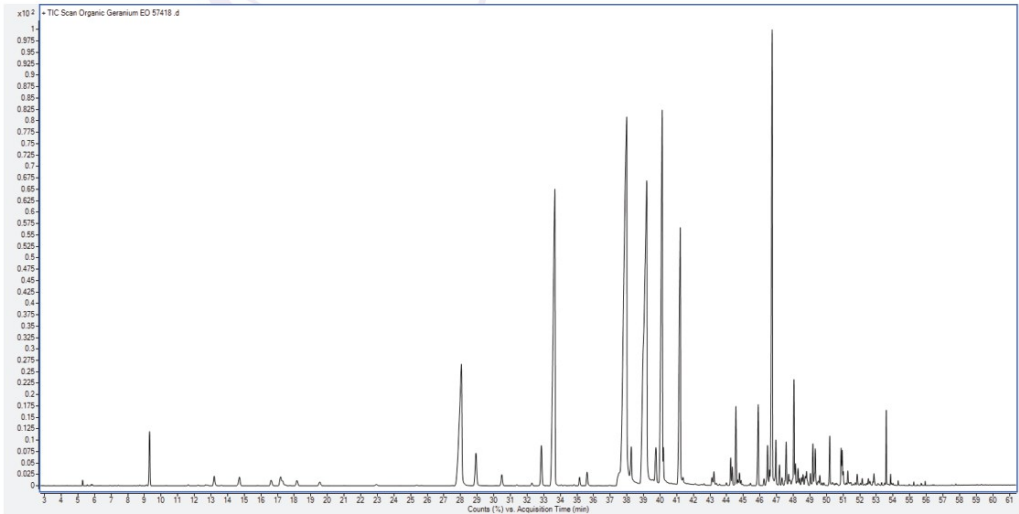
INCI NAME: *Pelargonium graveolens*
Plant Part: Aerial parts
Processing: Steam Distillation

TYPICAL PHYSICAL CHARACTERISTICS

Specific Gravity: 0.880 – 0.899
Refractive Index: 1.461 – 1.475

Typical Gas Chromatogram

CHEMICAL CHARACTERISTICS



Ginger



Suggested Use: For aromatherapy use. For all other uses, carefully dilute with a carrier oil such as jojoba, grapeseed, olive, or almond oil prior to use. Please consult an essential oil book or other professional reference source for suggested dilution ratios.

Natural essential oils are highly concentrated and should be used with care.

Caution: Keep out of reach of children. Avoid contact with eyes. If pregnant or nursing, consult your healthcare practitioner before using.



100% pure ginger
Zingiber officinale
1 fl. oz. (30 mL)

Ingredients: 100% pure ginger oil.

Aroma: Spicy, warm.

Attributes: Balancing, clarifying, stabilizing.

Blissful Thinking Blend: Add 1 drop each of ginger oil and orange oil and 2 drops of sandalwood oil blend to a diffuser and enjoy.

Extraction Method: Steam distilled from dried rhizome.

NOW® Essential Oils are analytically tested for identity, purity and adulteration to assure the highest quality.

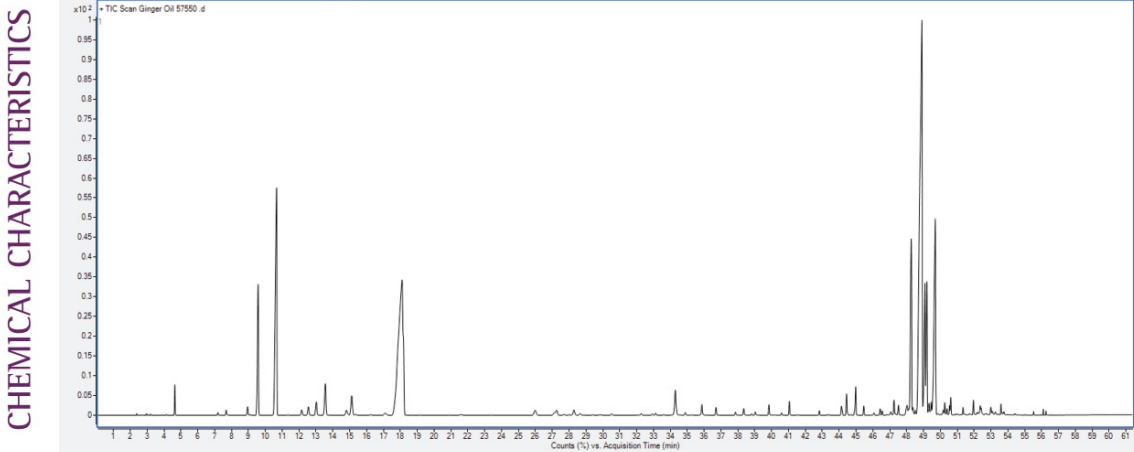
Code 7550 vs

INCI NAME: *Zingiber officinale*
Plant Part: Dried root
Processing: Steam Distillation

PHYSICAL CHARACTERISTICS

Specific Gravity: 0.870 – 0.882
Refractive Index: 1.488 – 1.494
Optical Rotation: –47 to –28 DEG

Gas Chromatogram



Grapefruit




Suggested Use: For aromatherapy use. For all other uses, carefully dilute with a carrier oil such as jojoba, grapeseed, olive, or almond oil prior to use. Please consult an essential oil book or other professional reference source for suggested dilution ratios.

Natural essential oils are highly concentrated and should be used with care.

Caution: Keep out of reach of children. Avoid contact with eyes. If pregnant or lactating, consult your healthcare practitioner before using. Do not use on skin. Reacts strongly to sunlight and other sources of ultraviolet light.

now®
essential oils



100% pure
grapefruit
Citrus paradisi
Net 1 fl. oz. (30 mL)

Ingredients: 100% pure grapefruit oil.

Aroma: Sweet, citrus.

Benefits: Purifying, cheerful, uplifting.

Summer Fun Blend: Add 1 drop each of lavender oil, peppermint oil and grapefruit oil to a diffuser and enjoy.

Extraction Method: Cold Pressed from fresh fruit peel.

Purity Tested/Quality Assured

Manufactured by NOW Foods
Bloomington, IL 61808, U.S.A.
www.nowfoods.com

6
7 3339 0755 3
Code 7553

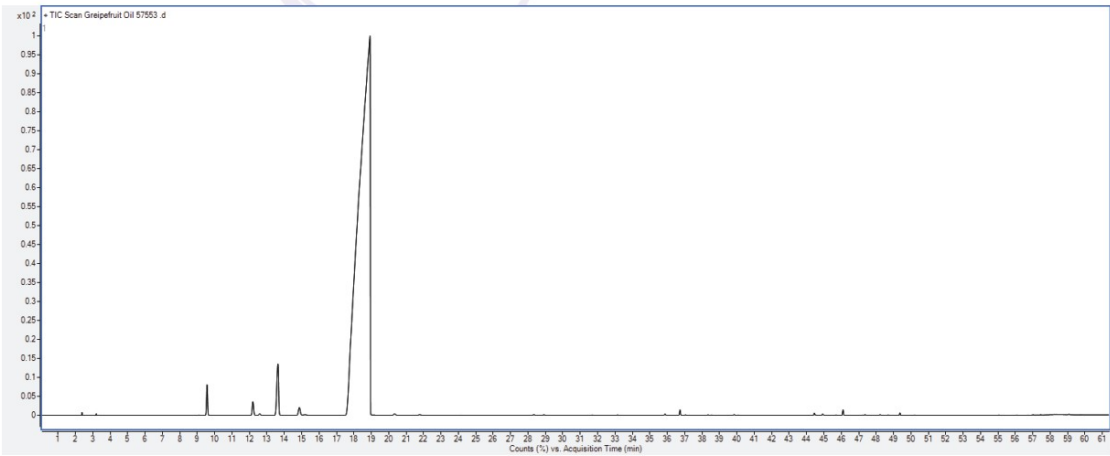
INCI NAME: *Citrus paradisi*
Plant Part: Fresh fruit peel
Processing: Cold Pressed

PHYSICAL CHARACTERISTICS

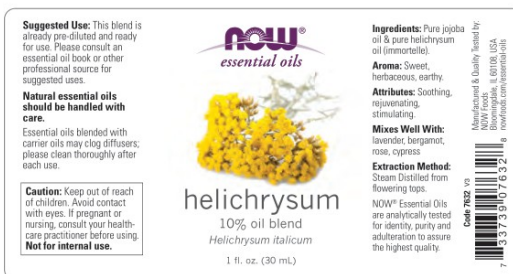
Specific Gravity: 0.848 – 0.856
Refractive Index: 1.475 – 1.478
Optical Rotation: +91 to +96 DEG

Gas Chromatogram

CHEMICAL CHARACTERISTICS



Helichrysum

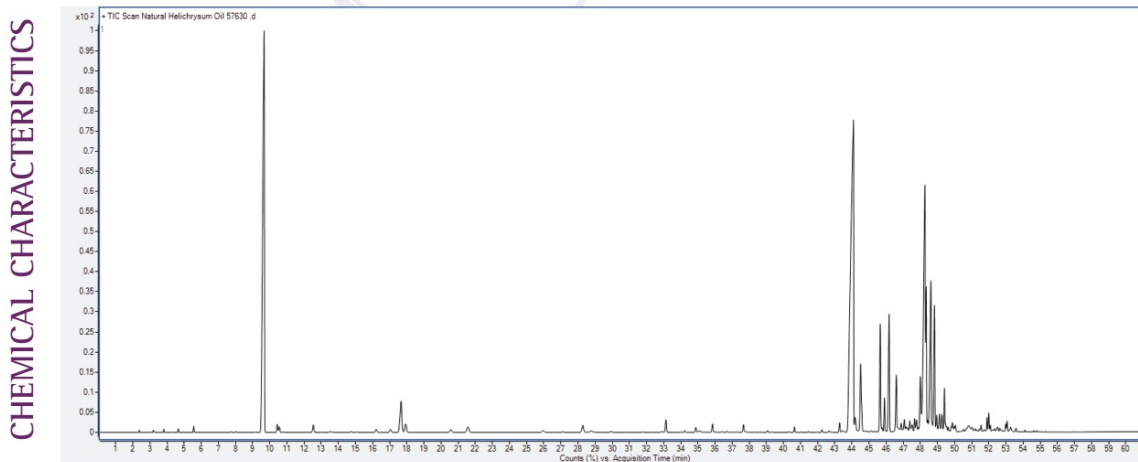


NOTE: All physical and chemical parameters are for pure helichrysum essential oil.

TYPICAL PHYSICAL CHARACTERISTICS

Refractive Index: 1.470 – 1.484

Typical Gas Chromatogram



Hyssop



Suggested Use: For aromatherapy use. For all other uses, carefully dilute with a carrier oil such as jojoba, grapeseed, olive, or almond oil prior to use. Please consult an essential oil book or other professional reference source for suggested dilution ratios.

Natural essential oils are highly concentrated and should be used with care.

Caution: Keep out of reach of children. Avoid contact with eyes. If pregnant or lactating, consult your healthcare practitioner before using. Not for internal use.

100% pure
hyssop
Hyssopus officinalis
Net 1 fl. oz. (30 mL)

Ingredients: 100% pure hyssop oil.

Aroma: Camphor like.

Benefits: Clarifying, refreshing, purifying.

Open Airways Blend: Add 6 drops of hyssop oil, 4 drops of lavender oil and 2 drops of peppermint oil to a diffuser and enjoy.

Extraction Method: Steam Distilled from plant's flowering tops and leaves.

Purity Tested/Quality Assured

Manufactured by NOW Foods, Bloomington, IL 61818, U.S.A.
www.nowfoods.com

7 5339 07556 7
Code 7556

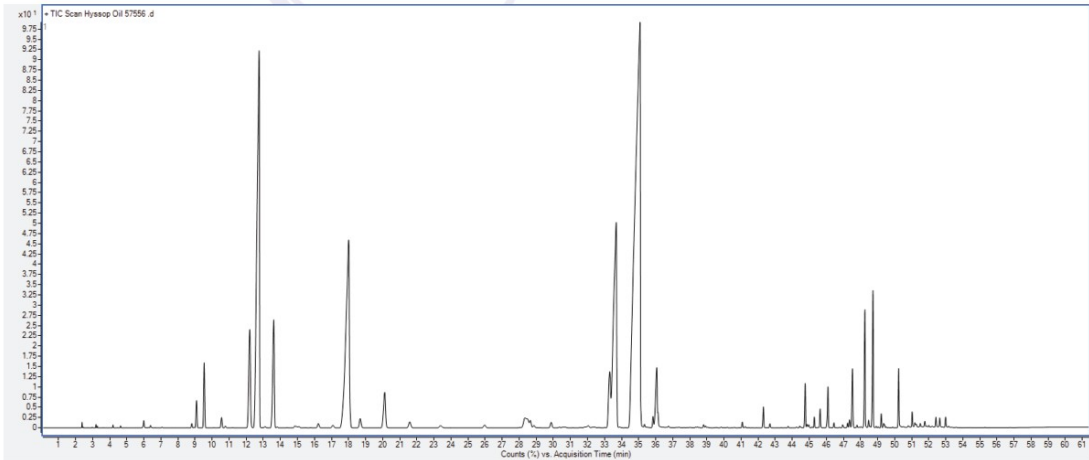
INCI NAME: *Hyssopus officinalis*
Plant Part: Flowering tops and leaves
Processing: Steam Distillation

PHYSICAL CHARACTERISTICS

Specific Gravity: 0.917 – 0.965
Refractive Index: 1.473 – 1.486

Gas Chromatogram

CHEMICAL CHARACTERISTICS



Jasmine Absolute



INCI NAME: *Jasminum grandiflorum*
 Plant Part: Jasmine flowers
 Processing: Solvent Extracted

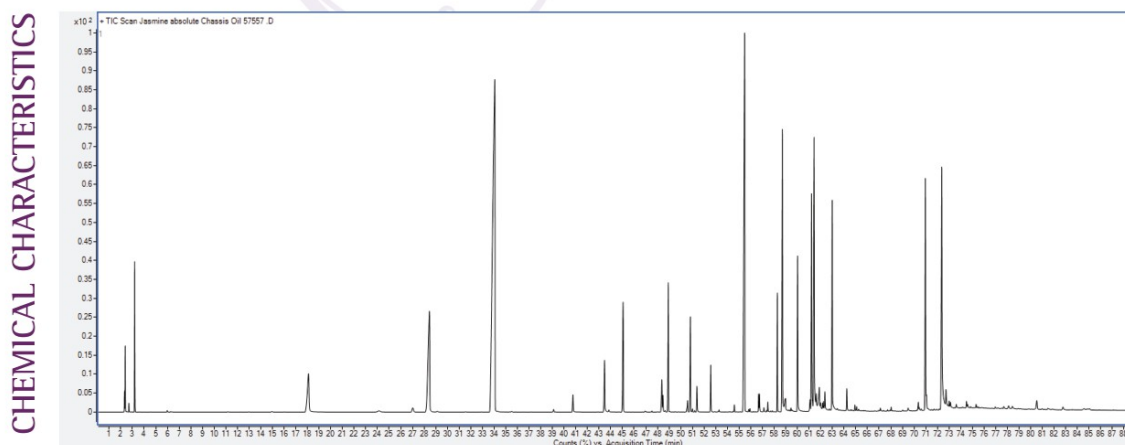
NOTE: Physical parameters and chromatogram is for pure jasmine absolute essential oil.

TYPICAL PHYSICAL CHARACTERISTICS

Specific Gravity: 0.865 – 0.875

Refractive Index: 1.478 – 1.530

Typical Gas Chromatogram



Juniper Berry



Suggested Use: For aromatherapy use. For all other uses, carefully dilute with a carrier oil such as jojoba, grapeseed, olive, or almond oil prior to use. Please consult an essential oil book or other professional reference source for suggested dilution ratios.

Natural essential oils are highly concentrated and should be used with care.

Caution: Keep out of reach of children. Avoid contact with eyes. If pregnant or lactating, consult your healthcare practitioner before using. **Not for internal use.**

Ingredients: 100% pure juniper berry oil.

Aroma: Floral.

Attributes: Restoring, empowering, balancing.

Mixes Well With: cypress oil, eucalyptus oil, rosemary oil, sage oil.

Extraction Method: Steam Distilled from dried ripe berry.

Purity Tested/Quality Assured

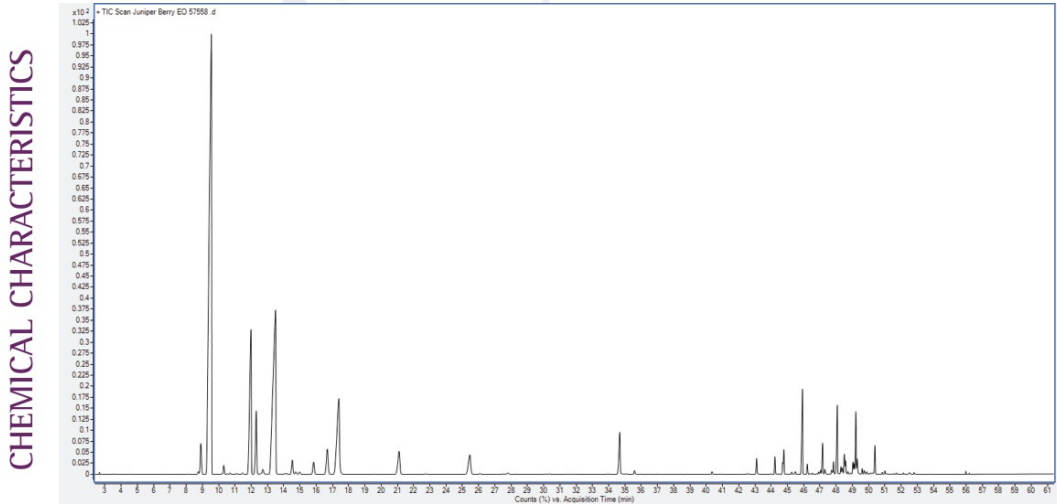
Code 7558 VII

INCI NAME: *Juniperus communis*
Plant Part: Dried ripe berry
Processing: Steam Distillation

PHYSICAL CHARACTERISTICS

Specific Gravity: 0.854 – 0.879
Refractive Index: 1.474 – 1.484
Optical Rotation: –15 to 0 DEG

Gas Chromatogram



Lavender



Suggested Use:
For aromatherapy use. For all other uses, carefully dilute with a carrier oil such as jojoba, grapeseed, olive, or almond oil prior to use. Please consult an essential oil book or other professional reference source for suggested dilution ratios.

Natural essential oils are highly concentrated and should be used with care.

Caution: Keep out of reach of children. Avoid contact with eyes. If pregnant or nursing, consult your healthcare practitioner before using. **Not for internal use.**



100% pure
lavender
Lavandula angustifolia
1 fl. oz. (30 mL)

Ingredient:
100% pure lavender oil.

Aroma: Floral.

Attributes: Soothing, normalizing, balancing.

Head Ease Blend:
3 drops lavender oil
3 drops peppermint oil
3 drops chamomile oil

Extraction Method:
Steam Distilled from flowering tops.

NOV® Essential Oils are analytically tested for identity, purity and adulteration to assure the highest quality.

Quality Tested & Packaged by:
NOV® Food Products
Bloomington, IL 61710, USA
nowfoods.com/essentialoils

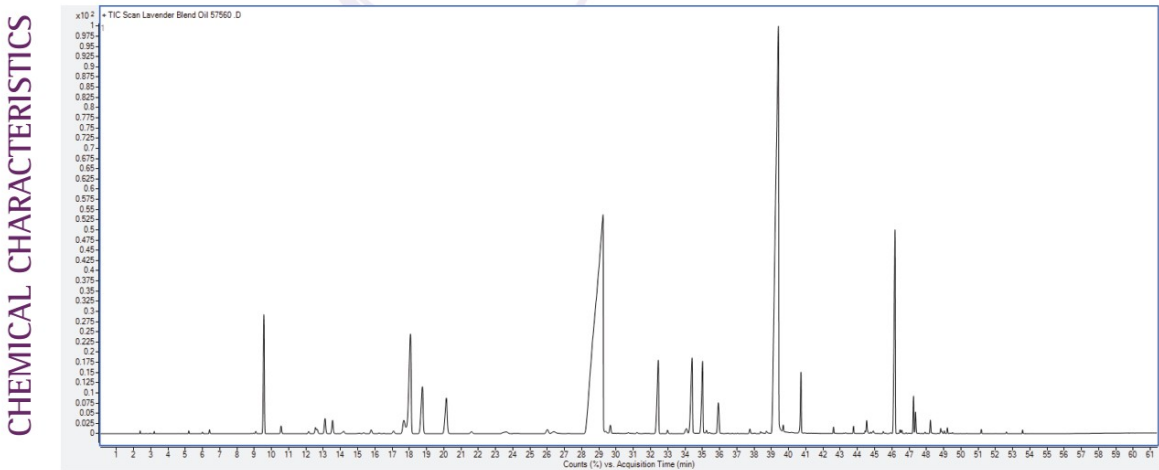
Order #590 or
33739107560

INCI NAME: *Lavandula angustifolia*
Plant Part: Flowering tops
Processing: Steam Distillation

PHYSICAL CHARACTERISTICS

Specific Gravity: 0.875 – 0.896
Refractive Index: 1.459 – 1.470
Optical Rotation: -12.5 to -6.0 DEG

Gas Chromatogram



ORGANIC
Lavender



Suggested Use: For aromatherapy use. For all other uses, carefully dilute with a carrier oil such as jojoba, grapeseed, olive, or almond prior to use. Please consult an essential oil book or other professional reference source for suggested dilution ratios.

Natural essential oils are highly concentrated and should be used with care.

Caution: Keep out of reach of children. Avoid contact with eyes. If pregnant or nursing, consult your healthcare practitioner before using. **Not for internal use.**



certified organic & 100% pure
lavender
Lavandula angustifolia

1 fl. oz. (30 mL)



Ingredient: Organic *Lavandula Angustifolia* (Lavender) Oil.

Aroma: Floral.

Attributes: Soothing, normalizing, balancing.

Head Easo Blend:
3 drops lavender oil
3 drops peppermint oil
3 drops chamomile oil

Extraction Method: Steam Distilled from flowering tops.

NOW® Essential Oils are analytically tested for identity, purity and adulteration to assure the highest quality.

Code 7430 vs

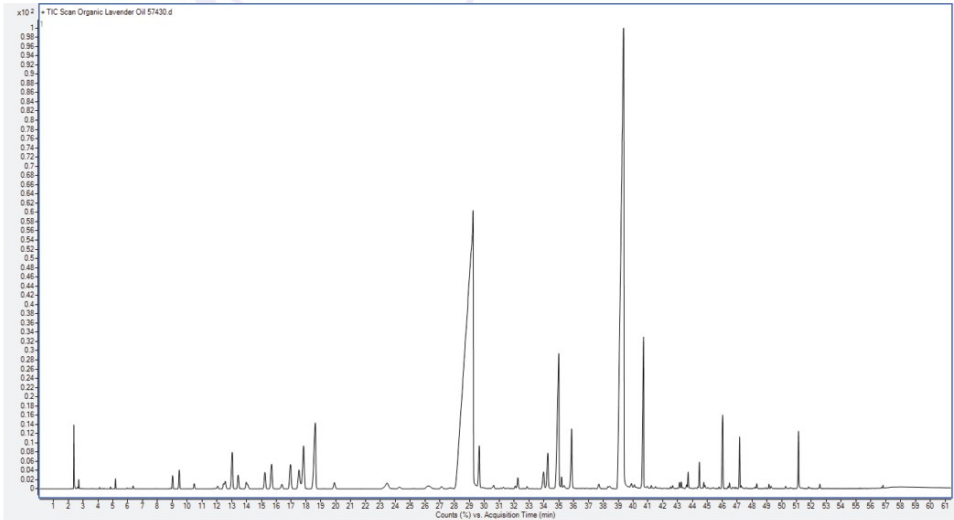
INCI NAME: *Lavandula angustifolia*
Plant Part: Flowering tops
Processing: Steam Distillation

PHYSICAL CHARACTERISTICS

Specific Gravity: 0.875 – 0.888
Refractive Index: 1.459 – 1.470
Optical Rotation: –12.5 to –6.0 DEG

Gas Chromatogram

CHEMICAL CHARACTERISTICS



Lemon



Suggested Use:
For aromatherapy use. For all other uses, carefully dilute with a carrier oil such as jojoba, grapeseed, olive, or almond oil prior to use. Please consult an essential oil book or other professional reference source for suggested dilution ratios.

Natural essential oils are highly concentrated and should be used with care.

Caution: Keep out of reach of children. Avoid contact with eyes. If pregnant or nursing, consult your healthcare practitioner before using. Do not use on skin. Reacts strongly to sunlight and other sources of ultraviolet light.

now®
essential oils



100% pure
lemon
Citrus limon
1 fl. oz. (30 mL)

Ingredient: 100% pure lemon oil.

Aroma: Fresh lemon peel.

Attributes: Refreshing, cheerful, uplifting.

Cheer Up Buttercup Blend: Add 1 drop each of lime oil and grapefruit oil, 2 drops of lemon oil and 6 drops of tangerine oil. Add to a diffuser and enjoy.

Extraction Method: Cold Pressed from fresh fruit peel.

NOW® Essential Oils are analytically tested for identity, purity and adulteration to assure the highest quality.

Code 7565 VS

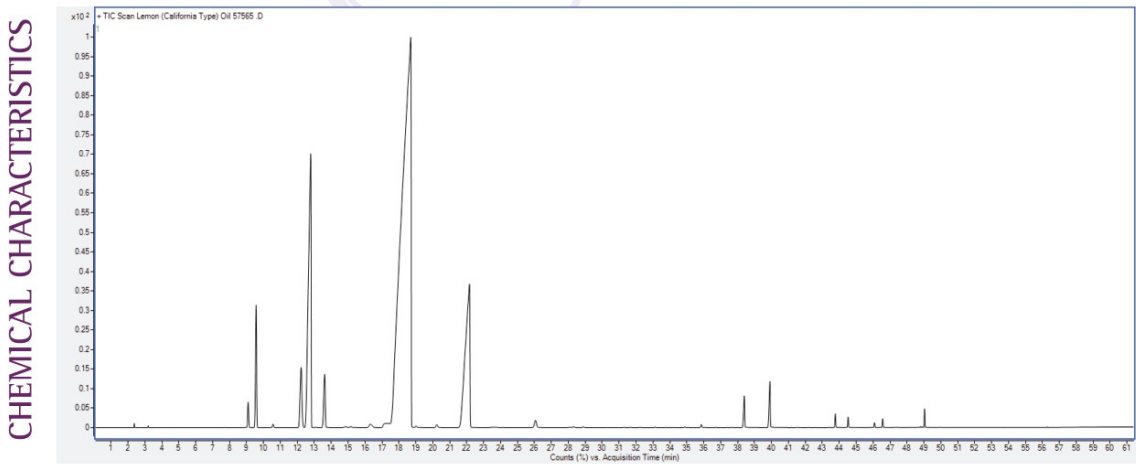


INCI NAME: *Citrus limon*
Plant Part: Fresh fruit peel
Processing: Cold Pressed

PHYSICAL CHARACTERISTICS

Specific Gravity: 0.849 – 0.855
Refractive Index: 1.473 – 1.476
Optical Rotation: +57 to +65.6 DEG

Gas Chromatogram



ORGANIC
Lemon



Suggested Use: For aromatherapy use. For all other uses, carefully dilute with a carrier oil such as jojoba, grapeseed, olive, or almond oil prior to use. Please consult an essential oil book or other professional reference source for suggested dilution ratios.

Natural essential oils are highly concentrated and should be used with care.

Caution: Keep out of reach of children. Avoid contact with eyes. If pregnant or lactating, consult your healthcare practitioner before using. Do not use on skin. Reacts strongly to sunlight and other sources of ultraviolet light.

Ingredients: Organic lemon oil (100% pure).

Aroma: Fresh lemon peel.

Benefits: Refreshing, cheerful, uplifting.

Cheer Up Buttercup Blend: Add 1 drop each of lime oil and grapefruit oil, 2 drops of lemon oil and 6 drops of tangerine oil. Add to a diffuser and enjoy.

Extraction Method: Cold Pressed from fresh fruit peel.

Purity Tested/Quality Assured

100% pure & certified organic

lemon

Citrus limon

Net 1 fl. oz. (30 mL)

Code 7420

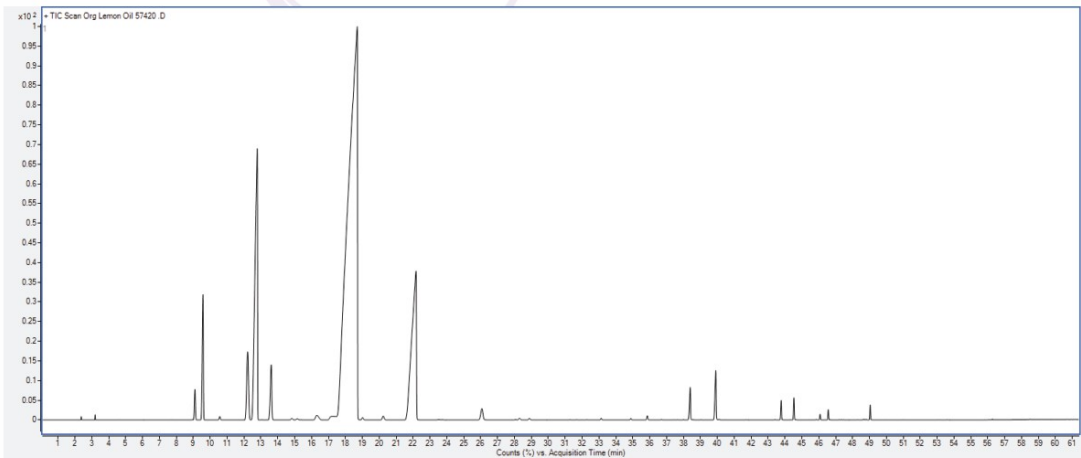
INCI NAME: *Citrus limon*
Plant Part: Fresh fruit peel
Processing: Cold Pressed

PHYSICAL CHARACTERISTICS

Specific Gravity: 0.849 – 0.855
Refractive Index: 1.473 – 1.476
Optical Rotation: +57.0 to +65.6 DEG

Gas Chromatogram

CHEMICAL CHARACTERISTICS



Lemon Eucalyptus



Suggested Use: For aromatherapy use. For all other uses, carefully dilute with a carrier oil such as jojoba, grapeseed, or almond oil prior to use. Please consult an essential oil book or other professional reference source for suggested dilution ratios.

Natural essential oils are highly concentrated and should be used with care.

Caution: Keep out of reach of children. Do not apply on children's skin, especially the face, mouth, nose and eyes. Avoid contact with eyes. If pregnant or nursing, consult your healthcare practitioner before using.

Not for internal use.

now
essential oils

lemon
eucalyptus

Eucalyptus citriodora
1 fl. oz. (30 mL)

Ingredient: 100% pure lemon eucalyptus oil (*Eucalyptus citriodora*).

Aroma: Citronella-like with subtle floral undertones.

Attributes: Refreshing, cleansing, stimulating.

Mixes Well With: Geranium, lavender, cedarwood, rosemary, mint and tree oils.

Extraction Method: Steam distilled from leaves and twigs.

Purity Tested/Quality Assured

NOW Foods
Bloomington, IL 61710, USA
nowfoods.com/naturalproducts

3373907638

Code 7638

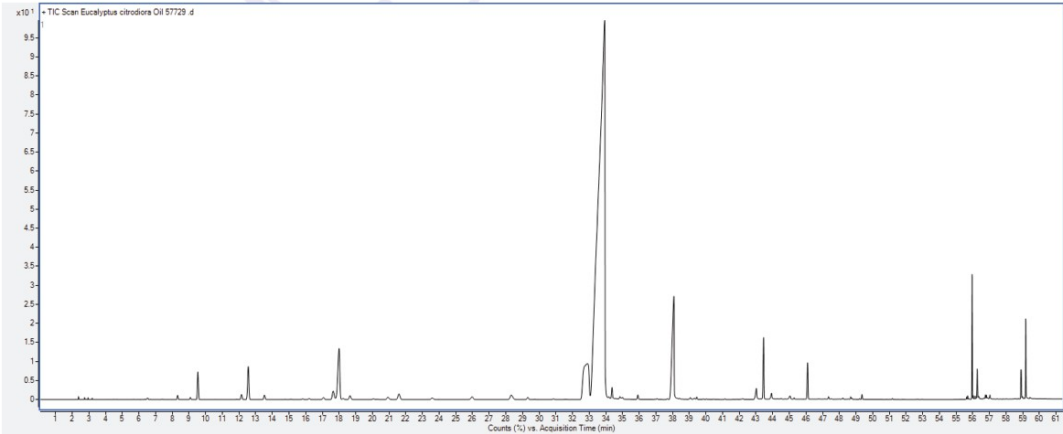
INCI NAME: *Eucalyptus citriodora*
Plant Part: Leaves and twigs
Processing: Steam Distillation

PHYSICAL CHARACTERISTICS

Specific Gravity: 0.860 - 0.877
Refractive Index: 1.450 - 1.459
Optical Rotation: -1 to +6.5 DEG

Gas Chromatogram

CHEMICAL CHARACTERISTICS



Lemongrass



Suggested Use: For aromatherapy use. For all other uses, carefully dilute with a carrier oil such as jojoba, grapeseed, olive, or almond oil prior to use. Please consult an essential oil book or other professional reference source for suggested dilution ratios.

Natural essential oils are highly concentrated and should be used with care.

Caution: Keep out of reach of children. Avoid contact with eyes. If pregnant or nursing, consult your healthcare practitioner before using.

100% pure lemongrass
Cymbopogon flexuosus
1 fl. oz. (30 mL)

Ingredient: 100% pure lemongrass oil.

Aroma: Strong, lemon-like.

Attributes: Purifying, stimulating, cleansing.

Spring Cleaning Blend: Add 10 drops of lemongrass oil, 5 drops of lemon oil and 1 drop of eucalyptus oil to a diffuser and enjoy.

Extraction Method: Steam Distilled from plant's leaves.

NOW® Essential Oils are analytically tested for identity, purity and adulteration to assure the highest quality.

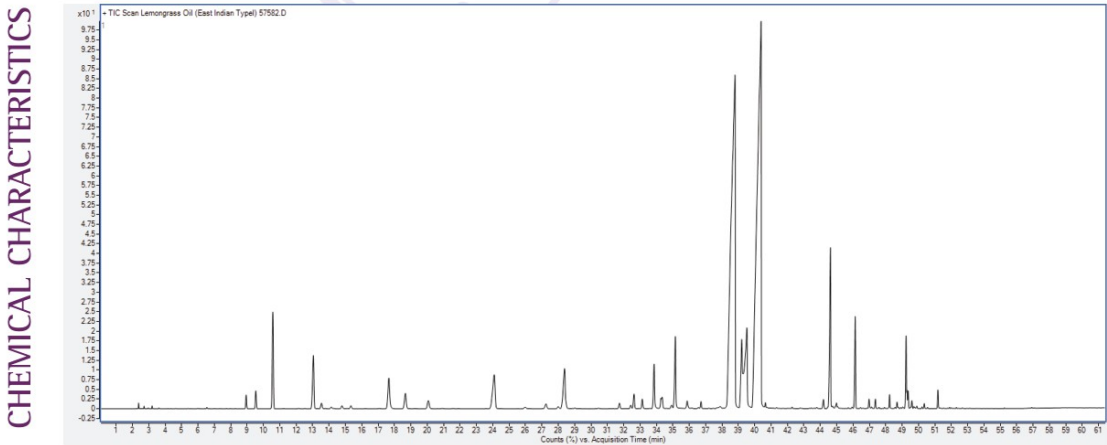
Code 7582 V4

INCI NAME: *Cymbopogon flexuosus*
Plant Part: Plant leaves
Processing: Steam Distillation

PHYSICAL CHARACTERISTICS

Specific Gravity: 0.890 – 0.904
Refractive Index: 1.483 – 1.489
Optical Rotation: -10 to 0 DEG

Gas Chromatogram



ORGANIC

Lemongrass

CHEMICAL CHARACTERISTICS



Suggested Use: For aromatherapy use. For all other uses, carefully dilute with a carrier oil such as jojoba, grapeseed, olive, or almond oil prior to use. Please consult an essential oil book or other professional reference source for suggested dilution ratios.

Natural essential oils are highly concentrated and should be used with care.

Caution: Keep out of reach of children. Avoid contact with eyes. If pregnant or nursing, consult your healthcare practitioner before using.

now®
organic essential oils

certified organic & 100% pure
lemongrass
Cymbopogon flexuosus
1 fl. oz. (30 mL)

USDA
ORGANIC

Ingredient: Organic lemongrass oil (100% pure).

Aroma: Fresh, grassy, lemon.

Attributes: Purifying, stimulating, cleansing.

Spring Freshening Blend: Add 10 drops of organic lemongrass oil, 5 drops of organic lemon oil and 1 drop of organic eucalyptus oil to a diffuser and enjoy.

Extraction Method: Steam Distilled from plant's leaves.

Purity Tested/Quality Assured

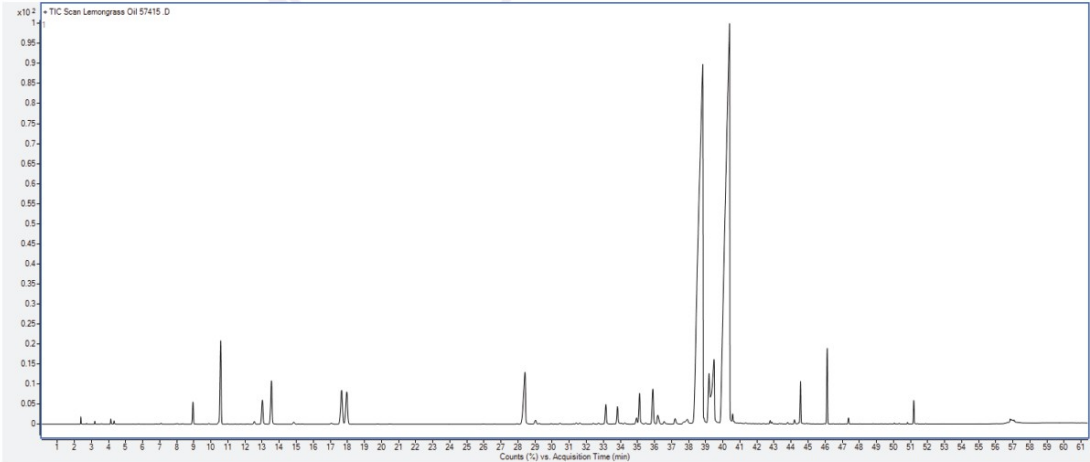
Code 7415 v1

INCI NAME: *Cymbopogon flexuosus*
Plant Part: Plant leaves
Processing: Steam Distillation

PHYSICAL CHARACTERISTICS

Specific Gravity: 0.890 – 0.904
Refractive Index: 1.478 – 1.498
Optical Rotation: –10 to 0 DEG

Gas Chromatogram



Lime



Suggested Use: For aromatherapy use. For all other uses, carefully dilute with a carrier oil such as jojoba, grapeseed, olive, or almond oil prior to use. Please consult an essential oil book or other professional reference source for suggested dilution ratios.

Natural essential oils are highly concentrated and should be used with care.

Caution: Keep out of reach of children. Avoid contact with eyes. If pregnant or lactating, consult your healthcare practitioner before using. Do not use on skin. Reacts strongly to sunlight and other sources of ultraviolet light.

100% pure lime
Citrus aurantifolia
Net 1 fl. oz. (30 mL)

Ingredients: 100% pure lime oil.

Aroma: Fresh citrus lime.

Benefits: Uplifting, refreshing, elating.

Mixes Well With: grapefruit oil, lavender oil, lemon oil, tea tree oil.

Extraction Method: Distillation of the juice or whole crushed fruit.

Purity Tested/Quality Assured

Now Foods, 10101 Foothill Blvd., Poway, CA 92129, U.S.A.
www.nowfoods.com

33739-07567-3
Code 7567

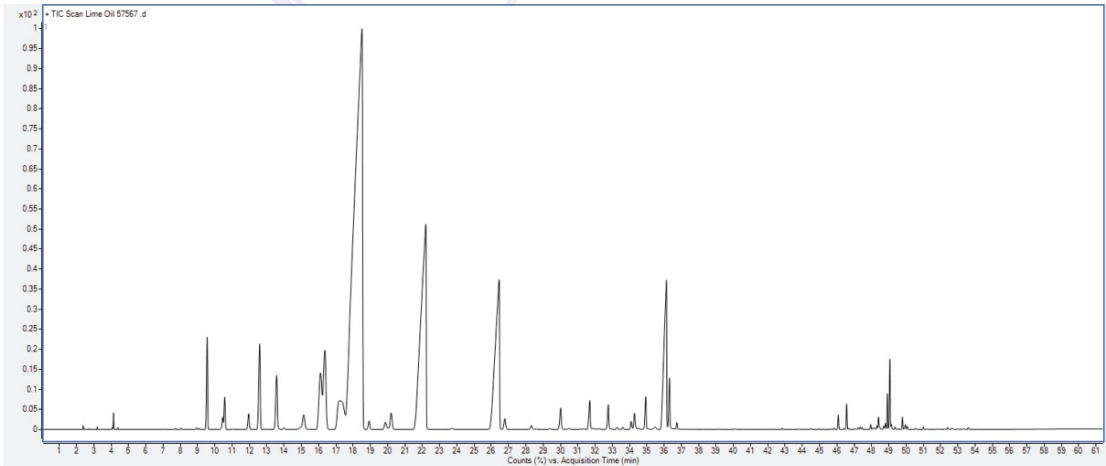
INCI NAME: *Citrus aurantifolia*
Plant Part: Whole crushed fruit
Processing: Steam Distillation

TYPICAL PHYSICAL CHARACTERISTICS

Specific Gravity: 0.855 – 0.863
Refractive Index: 1.474 – 1.477
Optical Rotation: +34 to +47 DEG

Typical Gas Chromatogram

CHEMICAL CHARACTERISTICS



Marjoram



Suggested Use: For aromatherapy use. For all other uses, carefully dilute with a carrier oil such as jojoba, grapeseed, olive, or almond oil prior to use. Please consult an essential oil book or other professional reference source for suggested dilution ratios.

Natural essential oils are highly concentrated and should be used with care.

Caution: Keep out of reach of children. Avoid contact with eyes. If pregnant or lactating, consult your healthcare practitioner before using.

100% pure marjoram
Thymus mastichina
Net 1 fl. oz. (30 mL)

Ingredients: 100% pure marjoram oil.

Aroma: Camphoraceous, slightly medicinal.

Benefits: Normalizing, comforting, warming.

Mixes Well With: basil oil, clary sage oil, rosemary oil, thyme oil.

Extraction Method: Steam Distilled from the leaves of flowers & plant.

Purity Tested/Quality Assured

Manufactured by NOW Foods, Bloomington, IL 61818, U.S.A.
www.nowfoods.com

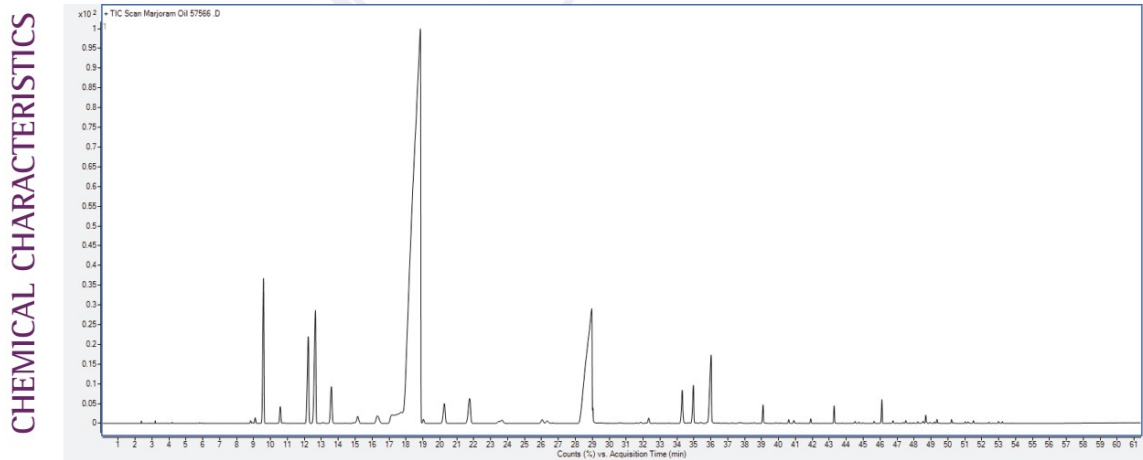
Code 7566

INCI NAME: *Thymus mastichina*
Plant Part: Flowering plant
Processing: Steam Distillation

PHYSICAL CHARACTERISTICS

Specific Gravity: 0.904 – 0.920
Refractive Index: 1.463–1.468
Optical Rotation: –5.0 to +10.0 DEG

Gas Chromatogram



Myrrh



Suggested Use: For aromatherapy use. For all other uses, carefully dilute with a carrier oil such as jojoba, grapeseed, olive, or almond oil prior to use. Please consult an essential oil book or other professional reference source for suggested dilution ratios.

Natural essential oils are highly concentrated and should be used with care.

Caution: Keep out of reach of children. Avoid contact with eyes. If pregnant or lactating, consult your healthcare practitioner before using. Not for internal use.

now
essential oils



100% pure
myrrh
Commiphora myrrha
Net 1 fl. oz. (30 mL)

Ingredients: 100% pure myrrh oil.

Aroma: Musky, warm.

Benefits: Focusing, centering, meditative.

Mixes Well With: frankincense oil, patchouli oil, sandalwood oil blend, vanilla concentrate oil.

Extraction Method: Steam Distilled from plant's oleoresin-gum.

Purity Tested/Quality Assured

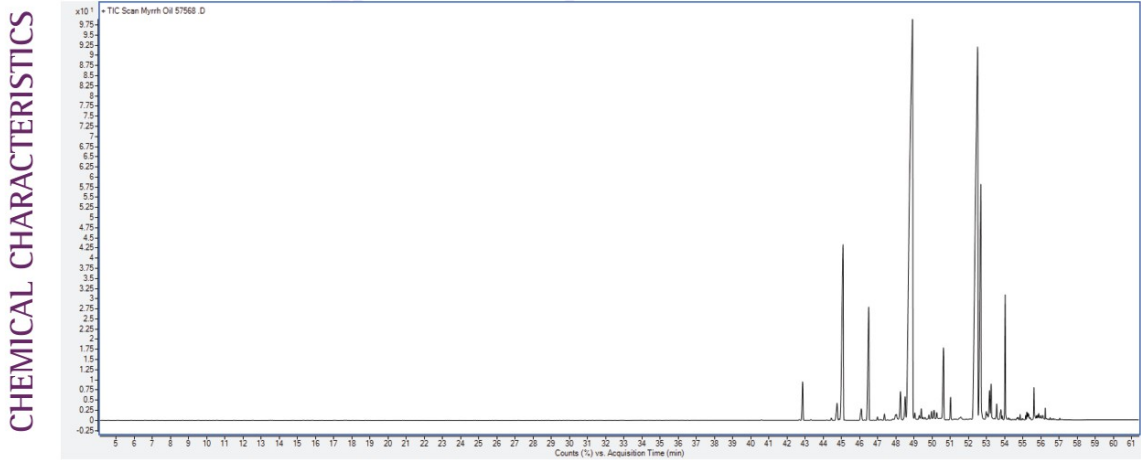
Code 7568

INCI NAME: *Commiphora myrrha*
Plant Part: Plant's oleoresin-gum
Processing: Steam Distillation

PHYSICAL CHARACTERISTICS

Specific Gravity: 0.985 - 1.014
Refractive Index: 1.519 - 1.528
Optical Rotation: -98 to -60 DEG

Gas Chromatogram



Neroli



Suggested Use: This blend is already pre-diluted and ready for use. Please consult an essential oil book or other professional source for suggested uses.

Natural essential oils should be handled with care.

Essential oils blended with carrier oils may clog diffusers; please clean thoroughly after each use.

Caution: Keep out of reach of children. Avoid contact with eyes. If pregnant or nursing, consult your health-care practitioner before using. **Not for internal use.**

now
essential oils

neroli
7.5% oil blend
Citrus aurantium
1 fl. oz. (30 mL)

Ingredients: Pure jojoba oil & pure neroli oil.

Aroma: Deep, floral aroma.

Attributes: Calming, soothing, centering.

Mixes Well With: citrus oils, chamomile oil, patchouli oil, ylang ylang oil.

Extraction Method: Steam Distilled from flowers.

Purity Tested/Quality Assured

Now Foods
Bloomington, IL 61818, USA
nowfoods.com/neroli

Code 75768 v4

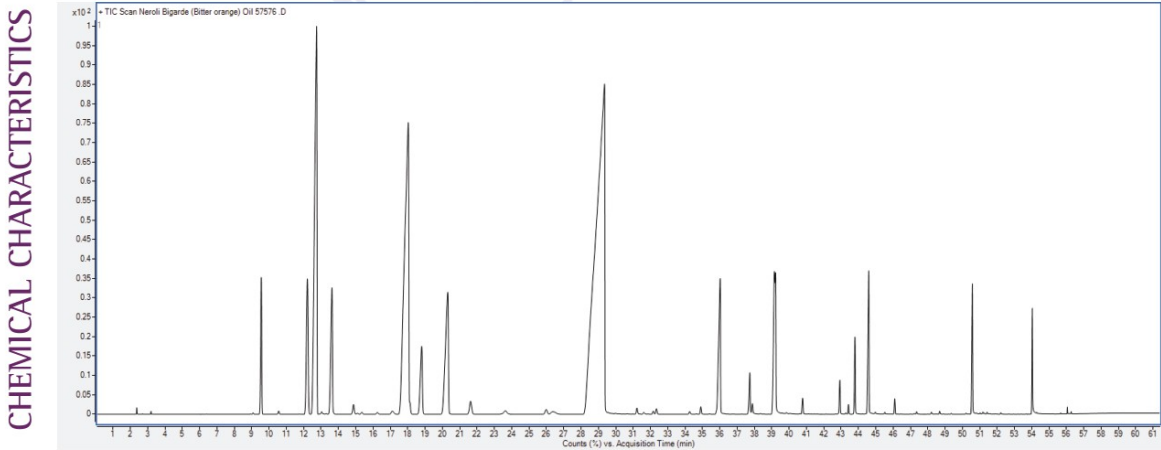
INCI NAME: *Citrus aurantium*
Plant Part: Flowers
Processing: Steam Distillation

NOTE: All physical and chemical parameters are for pure neroli essential oil.

TYPICAL PHYSICAL CHARACTERISTICS

Refractive Index: 1.466 – 1.474
Specific Gravity: 0.862 – 0.875

Typical Gas Chromatogram



Nutmeg



Suggested Use: For aromatherapy use. For all other uses, carefully dilute with a carrier oil such as jojoba, grapeseed, olive, or almond oil prior to use. Please consult an essential oil book or other professional reference source for suggested dilution ratios.

Natural essential oils are highly concentrated and should be used with care.

Caution: Keep out of reach of children. Avoid contact with eyes. If pregnant or lactating, consult your healthcare practitioner before using. Not for internal use.

100% pure nutmeg
Myristica fragrans
Net 1 fl. oz. (30 mL)

Ingredients: 100% pure nutmeg oil.

Aroma: Spicy, nutty, soft sweet aroma.

Benefits: Energizing, stimulating, warming.

Mixes Well With: cinnamon bark oil, clove oil, orange oil, vanilla concentrate oil.

Extraction Method: Steam Distilled from nutmeg seeds.

Purity Tested/Quality Assured

Manufactured by NOW Foods, 2355 Central Expressway, Fremont, CA 94538, U.S.A.
www.nowfoods.com

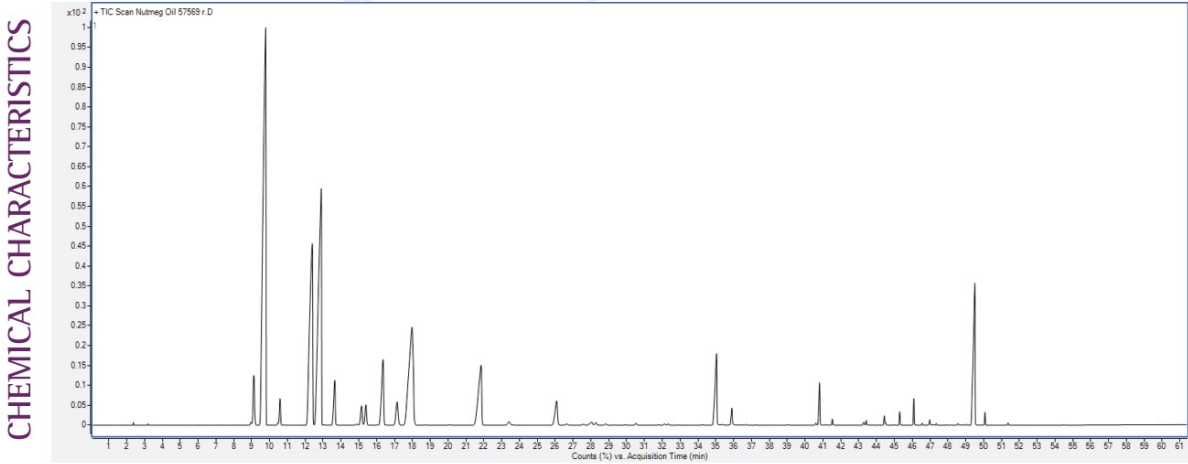
Code 7581

INCI NAME: *Myristica fragrans*
Plant Part: Seeds
Processing: Steam Distillation

PHYSICAL CHARACTERISTICS

Specific Gravity: 0.880 – 0.910
Refractive Index: 1.474 – 1.488
Optical Rotation: +8 to +30 DEG

Gas Chromatogram



Orange



Suggested Use:
For aromatherapy use. For all other uses, carefully dilute with a carrier oil such as jojoba, grapeseed, olive, or almond oil prior to use. Please consult an essential oil book or other professional reference source for suggested dilution ratios.

Natural essential oils are highly concentrated and should be used with care.

Caution: Keep out of reach of children. Avoid contact with eyes. If pregnant or nursing, consult your healthcare practitioner before using. Do not use on skin. Reacts strongly to sunlight and other sources of ultraviolet light.

100% pure
orange
Citrus sinensis
1 fl. oz. (30 mL)

Ingredient: 100% pure orange oil.
Aroma: Fresh, sweet orange peel.
Attributes: Refreshing, uplifting, invigorating.
Orange You Delightful Blend: Add 10 drops of orange oil and 25 drops of vanilla concentrate oil to a diffuser and enjoy.
Extraction Method: Cold Pressed from fresh fruit peel.
NOW® Essential Oils are analytically tested for identity, purity and adulteration to assure the highest quality.

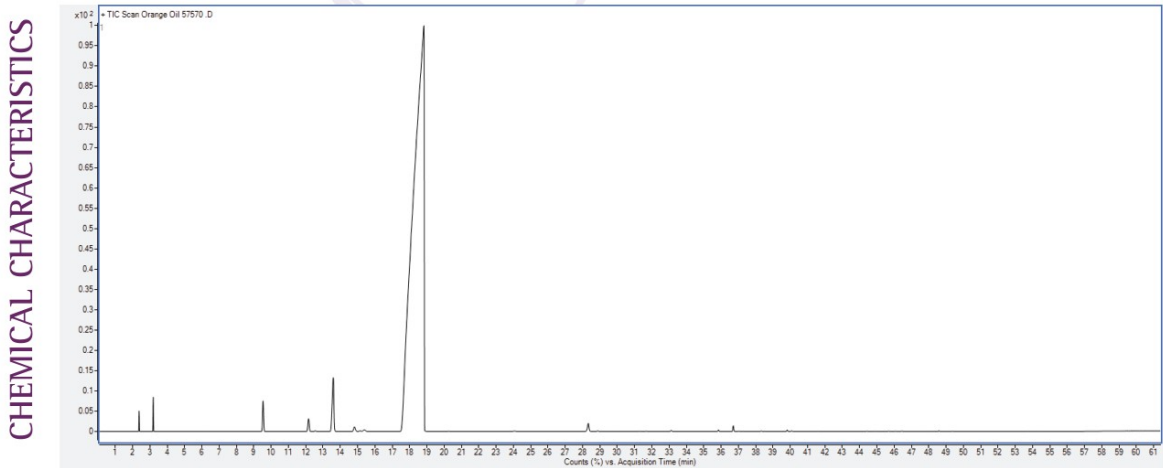
Quality Assured by a Third-Party Laboratory
Batch # 15030750
Purity: 99.9%
Packaged in the USA

INCI NAME: *Citrus sinensis*
Plant Part: Fresh fruit peel
Processing: Cold Pressed

PHYSICAL CHARACTERISTICS

Specific Gravity: 0.842 - 0.846
Refractive Index: 1.472 - 1.474
Optical Rotation: +94 to +99 DEG

Gas Chromatogram



ORGANIC
Orange



Suggested Use: For aromatherapy use. For all other uses, carefully dilute with a carrier oil such as jojoba, grapeseed, olive, or almond oil prior to use. Please consult an essential oil book or other professional reference source for suggested dilution ratios.

Natural essential oils are highly concentrated and should be used with care.

Caution: Keep out of reach of children. Avoid contact with eyes. If pregnant or lactating, consult your healthcare practitioner before using. Do not use on skin. Reacts strongly to sunlight and other sources of ultraviolet light.

now®
organic essential oils



100% pure & certified organic
orange
Citrus sinensis

Net 1 fl. oz. (30 mL)

USDA
ORGANIC

Ingredients: Organic orange oil (100% pure).

Aroma: Fresh, sweet orange peel.

Attributes: Refreshing, uplifting, invigorating.

Orange You Delightful Blend: Add 10 drops of orange oil and 25 drops of vanilla concentrate oil to a diffuser and enjoy.

Extraction Method: Cold Pressed from fresh fruit peel.

Purity Tested/Quality Assured

NOW Foods, INC., 4301 E. 12th Ave., Suite 100, Denver, CO 80231, USA
Certified Organic by QAI

Code 7440 1/4

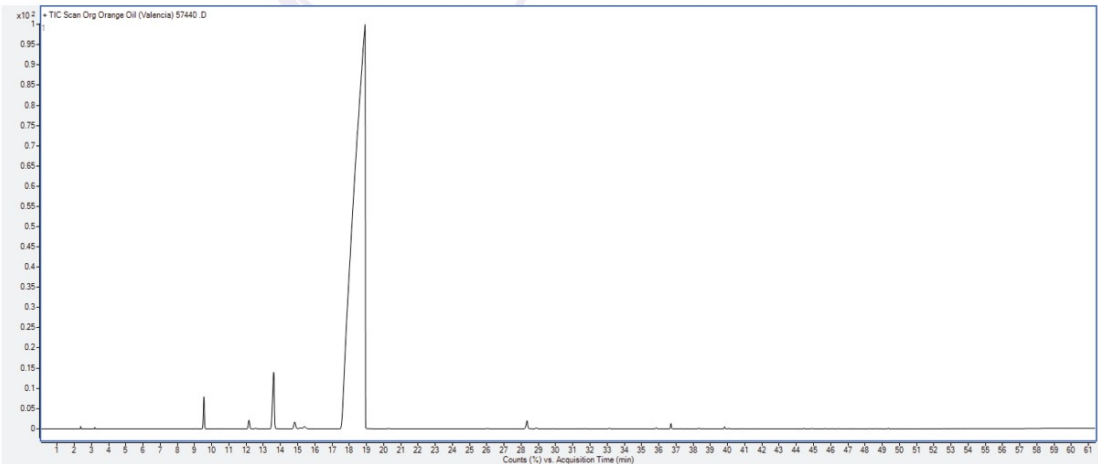
INCI NAME: *Citrus sinensis*
Plant Part: Fresh fruit peel
Processing: Cold Pressed

PHYSICAL CHARACTERISTICS

Specific Gravity: 0.842 – 0.846
Refractive Index: 1.472 – 1.474
Optical Rotation: +94 to +99 DEG

Gas Chromatogram

CHEMICAL CHARACTERISTICS



Oregano



Suggested Use: For aromatherapy use. For all other uses, carefully dilute with a carrier oil such as jojoba, grapeseed, olive, or almond oil prior to use. Please consult an essential oil book or other professional reference source for suggested dilution ratios.

Natural essential oils are highly concentrated and should be used with care.

Caution: Not for internal or topical use at this strength; never use undiluted. Avoid contact with skin or eyes. Keep out of reach of children. If pregnant or lactating, consult your healthcare practitioner before using.

100% pure
oregano
Origanum vulgare
Net 1 fl. oz. (30 mL)

Ingredients: 100% pure oregano oil.

Aroma: Spicy, camphoraceous.

Benefits: Purifying, comforting, invigorating.

Mixes Well With: chamomile oil, eucalyptus oil, tea tree oil, spearmint oil.

Extraction Method: Steam Distilled from dried flowering herb.

Purity Tested/Quality Assured

Distributed by NOW Foods, Inc., 2355 Central Expressway, Fremont, CA 94538, U.S.A. www.nowfoods.com

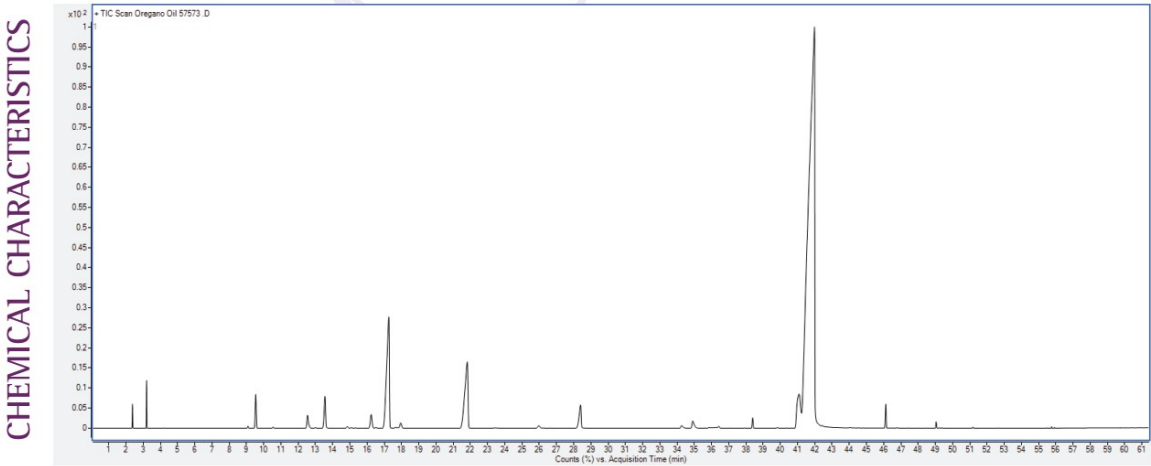
Code 7573 v3

INCI NAME: *Origanum vulgare*
Plant Part: Herb and leaves
Processing: Steam Distillation

PHYSICAL CHARACTERISTICS

Specific Gravity: 0.935 – 0.960
Refractive Index: 1.506 – 1.512

Gas Chromatogram



ORGANIC
Oregano



Suggested Use: For aromatherapy use. For all other uses, carefully dilute with a carrier oil such as jojoba, grapeseed, olive, or almond oil prior to use. Please consult an essential oil book or other professional reference source for suggested dilution ratios.

Natural essential oils are highly concentrated and should be used with care.

Caution: Not for internal or topical use at this strength, never use undiluted. Avoid contact with skin or eyes. Keep out of reach of children. If pregnant or nursing, consult your healthcare practitioner before using.

certified organic & 100% pure
oregano
Origanum vulgare
1 fl. oz. (30 mL)

Ingredient: Organic oregano oil (100% pure).

Aroma: Spicy, camphoraceous.

Attributes: Purifying, comforting, invigorating.

Mixes Well With: chamomile oil, eucalyptus oil, tea tree oil, spearmint oil.

Extraction Method: Steam Distilled from dried flowering herb.

Purity Tested/Quality Assured

Code 7443 V1

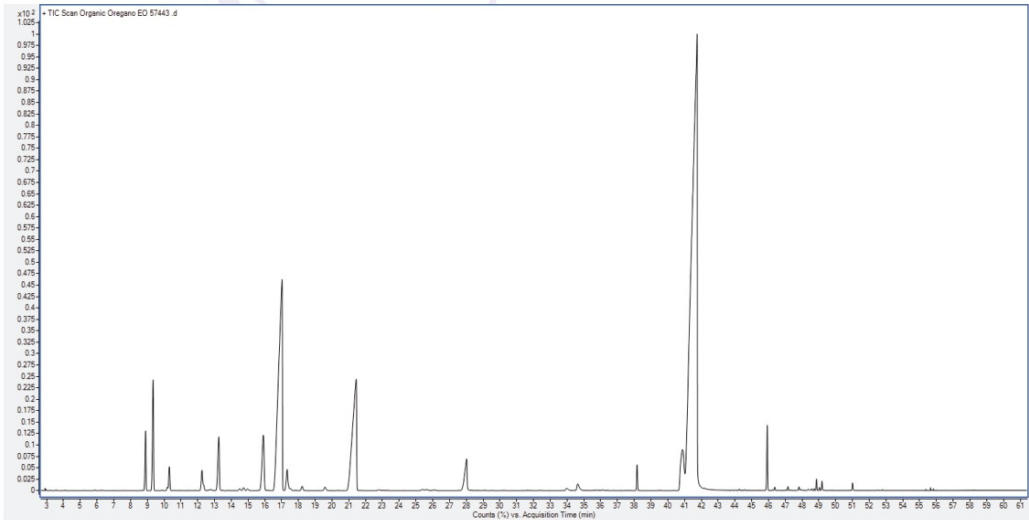
INCI NAME: *Origanum vulgare*
Plant Part: Dried flowering herb
Processing: Steam Distillation

PHYSICAL CHARACTERISTICS

Specific Gravity: 0.935 – 0.960
Refractive Index: 1.506 – 1.512
Optical Rotation: –2.0 to +3.0 DEG

Gas Chromatogram

CHEMICAL CHARACTERISTICS



Patchouli



Suggested Use: For aromatherapy use. For all other uses, carefully dilute with a carrier oil such as jojoba, grapeseed, olive, or almond oil prior to use. Please consult an essential oil book or other professional reference source for suggested dilution ratios.

Natural essential oils are highly concentrated and should be used with care.

Caution: Keep out of reach of children. Avoid contact with eyes. If pregnant or lactating, consult your healthcare practitioner before using. Not for internal use.

100% pure patchouli
Pogostemon cablin
Net 1 fl. oz. (30 mL)

Ingredients: 100% pure patchouli oil.

Aroma: Musky, earthy.

Benefits: Romantic, soothing, stimulating.

Love is in the Air Blend: Add 1 drop of patchouli oil, 3 drops of jasmine absolute oil and 5 drops of geranium oil to a diffuser and enjoy.

Extraction Method: Steam Distilled from dried leaves.

Purity Tested/Quality Assured

Manufactured by NOW Foods
Bloomington, IL 61801, U.S.A.
www.nowfoods.com

Code 7575

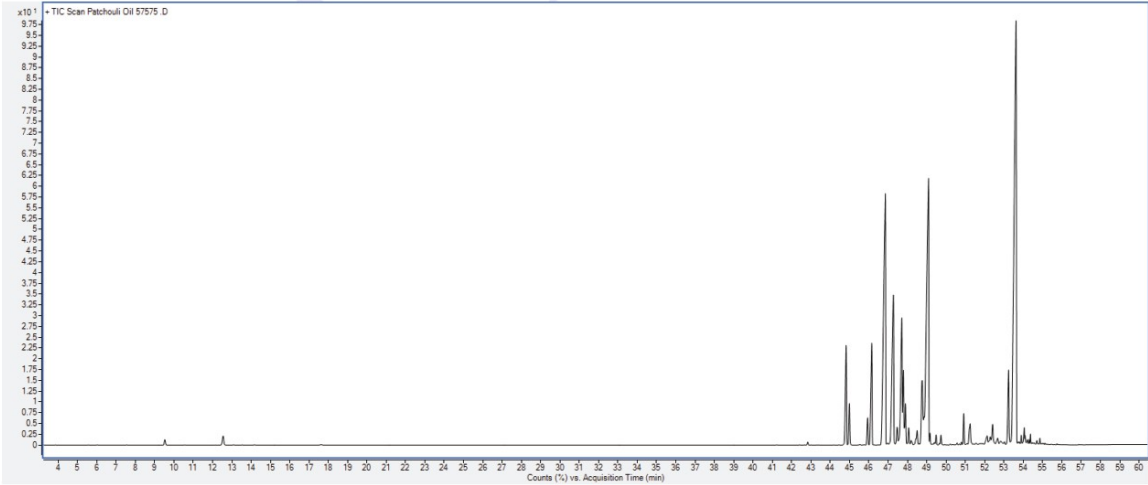
INCI NAME: *Pogostemon cablin*
Plant Part: Dried leaves
Processing: Steam Distillation

PHYSICAL CHARACTERISTICS

Specific Gravity: 0.950 – 0.970
Refractive Index: 1.505 – 1.518

CHEMICAL CHARACTERISTICS

Gas Chromatogram



ORGANIC
Patchouli



Suggested Use: For aromatherapy use. For all other uses, carefully dilute with a carrier oil such as jojoba, grapeseed, olive, or almond oil prior to use. Please consult an essential oil book or other professional reference source for suggested dilution ratios.

Natural essential oils are highly concentrated and should be used with care.

Caution: Keep out of reach of children. Avoid contact with eyes. If pregnant or nursing, consult your healthcare practitioner before using. **Not for internal use.**

certified organic & 100% pure
patchouli
Pogostemon cablin
1 fl. oz. (30 mL)

Ingredient: Organic patchouli oil (100% pure).

Aroma: Musky, earthy.

Attributes: Grounding, balancing, calming.

Mixes Well With: bergamot oil, frankincense oil, ylang ylang oil.

Extraction Method: Steam Distilled from dried leaves.

NOV® Essential Oils are analytically tested for identity, purity and adulteration to assure the highest quality.

Quality Tested & Packaged by: NOW Foods, Inc. 600188, USA. Botanical: Pogostemon cablin (L.) Oerle. Certified Organic by QAI.

Code 7445 V1

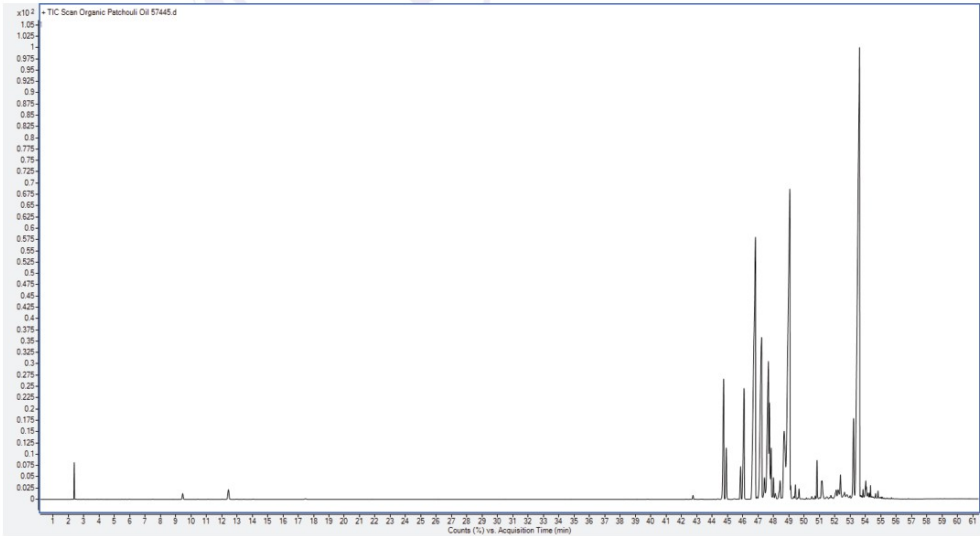
INCI NAME: *Pogostemon cablin*
Plant Part: Leaves
Processing: Steam Distillation

PHYSICAL CHARACTERISTICS

Specific Gravity: 0.850 – 0.970
Refractive Index: 1.505 – 1.518
Optical Rotation: –48 to –68

Gas Chromatogram

CHEMICAL CHARACTERISTICS



Pennyroyal



Suggested Use: For aromatherapy use. For all other uses, carefully dilute with a carrier oil such as jojoba, grapeseed, olive, or almond oil prior to use. Please consult an essential oil book or other professional reference source for suggested dilution ratios. **Natural essential oils are highly concentrated and should be used with care.**

Caution: Keep out of reach of children. Avoid contact with eyes. Do not use if pregnant or nursing. **Not for internal use. May be harmful or fatal if swallowed.**

California Proposition 65
WARNING: This product can expose you to chemicals including pulegone, which is known to the State of California to cause cancer. For more information go to www.P65Warnings.ca.gov.

now®
essential oils

100% pure
pennyroyal
Mentha pulegium
1 fl. oz. (30 mL)

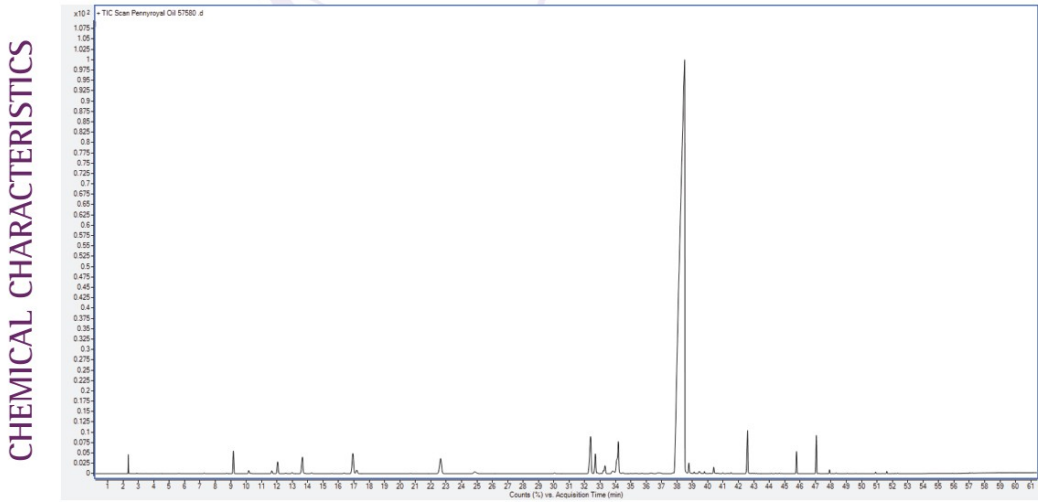
Ingredient: 100% pure pennyroyal oil.
Aroma: Fresh minty-like.
Attributes: Repelling, stimulating.
Mixes Well With: lemon oil, eucalyptus oil, lavender oil, tea tree oil.
Extraction Method: Steam distilled from leaves and flowering tops. NOW® Essential Oils are analytically tested for identity, purity and adulteration to assure the highest quality.

Code 7580 v5

INCI NAME: *Mentha pulegium*
Plant Part: Leaves and flowering tops
Processing: Steam Distillation

PHYSICAL CHARACTERISTICS
Specific Gravity: 0.928 – 0.940
Refractive Index: 1.483 – 1.488

Gas Chromatogram



Peppermint



Suggested Use: For aromatherapy use. For all other uses, carefully dilute with a carrier oil such as jojoba, grapeseed, olive, or almond oil prior to use. Please consult an essential oil book or other professional reference source for suggested dilution ratios.

Natural essential oils are highly concentrated and should be used with care.

Caution: Keep out of reach of children. Avoid contact with skin or eyes. If pregnant or nursing, consult your healthcare practitioner before using.

100% pure
peppermint
Mentha piperita
1 fl. oz. (30 mL)

Ingredient: 100% pure peppermint oil.

Aroma: Fresh, strong mint.

Attributes: Revitalizing, invigorating, cooling.

Energizing Blend: Add 1 drop each of peppermint oil and rosemary oil along with 2 drops of cinnamon oil to a diffuser and enjoy.

Extraction Method: Steam Distilled from aerial parts.

NOW® Essential Oils are analytically tested for identity, purity and adulteration to assure the highest quality.

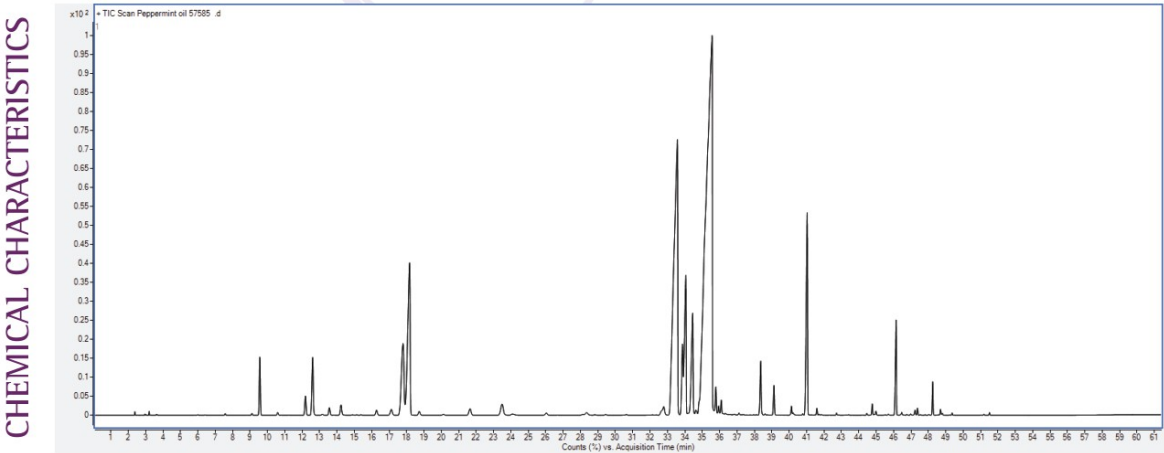
Code 7585 V6

INCI NAME: *Mentha piperita*
Plant Part: Leaves and aerial parts
Processing: Steam Distillation

PHYSICAL CHARACTERISTICS

Specific Gravity: 0.896 – 0.908
Refractive Index: 1.459 – 1.465
Optical Rotation: –32 to –18 DEG

Gas Chromatogram



ORGANIC
Peppermint



Suggested Use: For aromatherapy use. For all other uses, carefully dilute with a carrier oil such as jojoba, grapeseed, olive, or almond oil prior to use. Please consult an essential oil book or other professional reference source for suggested dilution ratios.

Natural essential oils are highly concentrated and should be used with care.

Caution: Keep out of reach of children. Avoid contact with skin or eyes. If pregnant or lactating, consult your healthcare practitioner before using.

100% pure & certified organic
peppermint
Mentha piperita

Net 1 fl. oz. (30 mL)

Ingredients: Organic peppermint oil (100% pure)

Aroma: Fresh, strong mint

Benefits: Revitalizing, invigorating, cooling.

Energizing Blend: Add 1 drop each of organic peppermint oil and organic rosemary oil along with 2 drops of cinnamon oil to a diffuser and enjoy.

Extraction Method: Steam Distilled from plant's leaves.

Purity Tested/Quality Assured

Manufactured by NOW Foods
Bloomington, IL 61810, U.S.A.
Certified Organic by Quality Assurance International

7 33739 07452

Code 7452

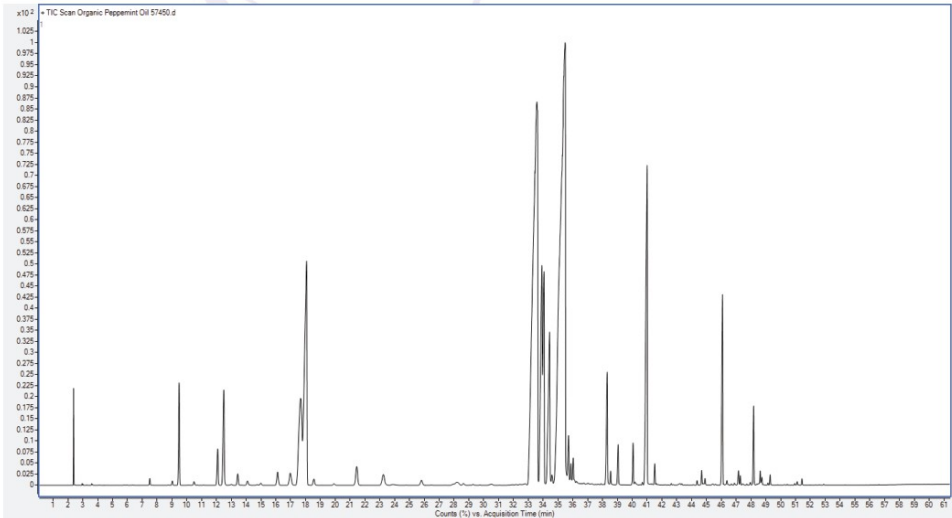
INCI NAME: *Mentha piperita*
Plant Part: Leaves
Processing: Steam Distillation

PHYSICAL CHARACTERISTICS

Specific Gravity: 0.896 – 0.908
Refractive Index: 1.459 – 1.465
Optical Rotation: –32 to –18 DEG

Gas Chromatogram

CHEMICAL CHARACTERISTICS



Pine Needle



Suggested Use: For aromatherapy use. For all other uses, carefully dilute with a carrier oil such as jojoba, grapeseed, olive, or almond oil prior to use. Please consult an essential oil book or other professional reference source for suggested dilution ratios.

Natural essential oils are highly concentrated and should be used with care.

Caution: Keep out of reach of children. Avoid contact with skin or eyes. If pregnant or lactating, consult your healthcare practitioner before using. Not for internal use.

100% pure pine needle
Pinus sylvestris
Net 1 fl. oz. (30 mL)

Ingredients: 100% pure pine needle oil.

Aroma: Balsamic, pine scent.

Benefits: Purifying, centering, refreshing.

Mixes Well With: balsam fir needle oil, cedarwood oil, juniper berry oil, rosemary oil.

Extraction Method: Steam Distilled from pine tree needles.

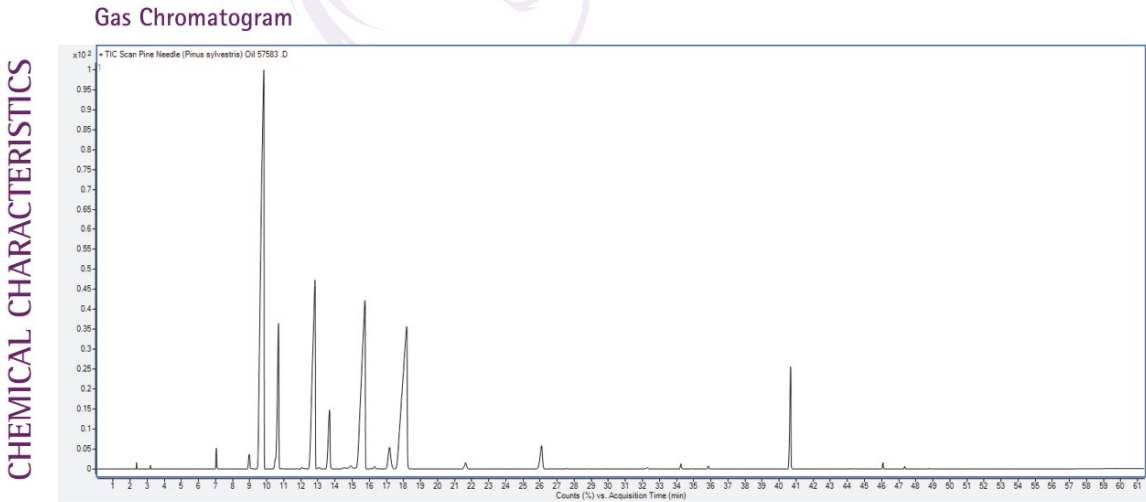
Purity Tested/Quality Assured

Code 7900 V3

INCI NAME: *Pinus sylvestris*
Plant Part: Needles
Processing: Steam Distillation

PHYSICAL CHARACTERISTICS

Specific Gravity: 0.855 – 0.885
Refractive Index: 1.470 – 1.485
Optical Rotation: –4 to +10 DEG



Rose Absolute



Suggested Use: This blend is already pre-diluted and ready for use. Please consult an essential oil book or other professional source for suggested uses.

Natural essential oils should be handled with care.

Essential oils blended with carrier oils may clog diffusers; please clean thoroughly after each use.

Caution: Keep out of reach of children. Avoid contact with eyes. If pregnant or nursing, consult your health-care practitioner before using.

Not for internal use.

now®
essential oils



rose
absolute
5% oil blend
Rosa damascena
1 fl. oz. (30 mL)

Ingredients: Pure jojoba oil & pure rose absolute.

Aroma: Pleasant rose.

Attributes: Romantic, uplifting, comforting.

Floral Meditation Blend: Add 5 drops of rose absolute oil and 1 drop of geranium oil to a diffuser and enjoy.

Extraction Method: Solvent extracted from rose petals.

NOW® Essential Oils are analytically tested for identity, purity and adulteration to assure the highest quality.

Manufactured & Quality Tested by:
NOW Foods
Bloomington, IL 61818 USA
www.nowfoods.com

Code 75976 v6

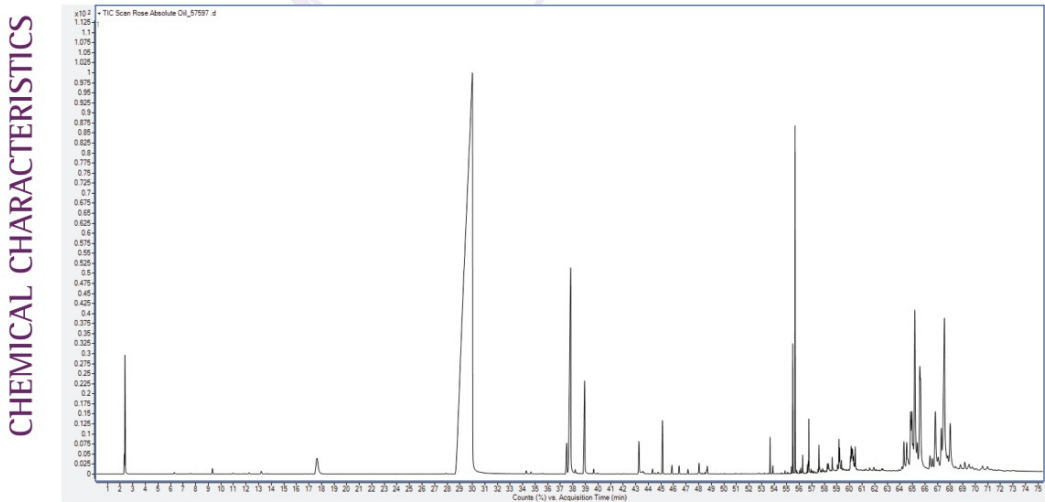
INCI NAME: Rosa damascena
Plant Part: Rose petals
Processing: Solvent Extracted

NOTE: Physical parameters and chromatogram is for pure rose absolute essential oil.

TYPICAL PHYSICAL CHARACTERISTICS

Specific Gravity: 0.947 – 1.097
Refractive Index: 1.495 – 1.520

Typical Gas Chromatogram



CHEMICAL CHARACTERISTICS

Rosemary



Suggested Use: For aromatherapy use. For all other uses, carefully dilute with a carrier oil such as jojoba, grapeseed, olive, or almond oil prior to use. Please consult an essential oil book or other professional reference source for suggested dilution ratios.

Natural essential oils are highly concentrated and should be used with care.

Caution: Keep out of reach of children. Avoid contact with eyes. If pregnant or lactating, consult your healthcare practitioner before using.

now® essential oils

100% pure rosemary

Rosmarinus officinalis

Net 1 fl. oz. (30 mL)

Ingredients: 100% pure rosemary oil.

Aroma: Warm, camphoraceous.

Benefits: Purifying, uplifting.

Mixes Well With: bergamot oil, lemongrass oil, peppermint oil, thyme oil.

Extraction Method: Steam Distilled from tops of plant.

Purity Tested/Quality Assured

Manufactured by NOW Foods, Bloomington, IL 61818, U.S.A.
www.nowfoods.com

35739-07600

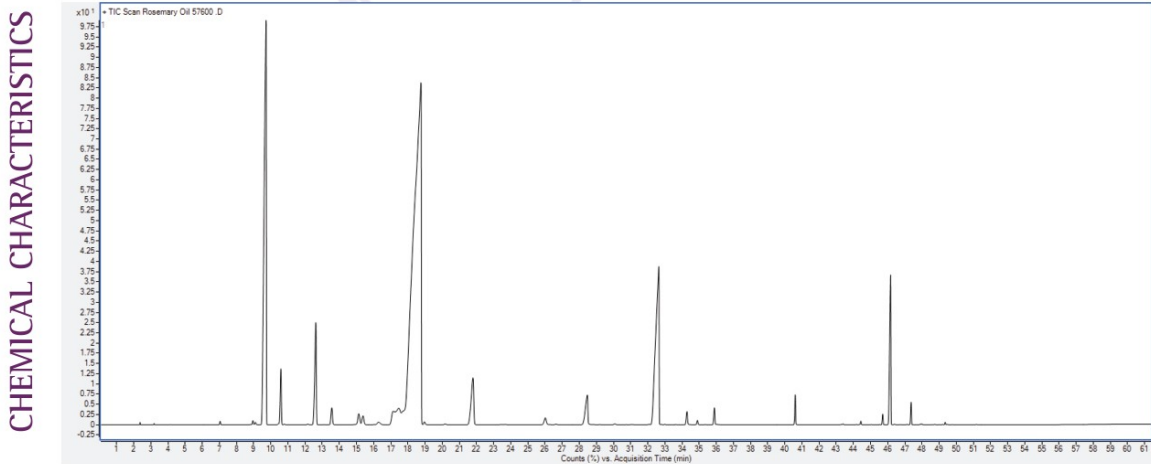
Code 7600

INCI NAME: *Rosmarinus officinalis*
Plant Part: Flowers, Stems, Leaves
Processing: Steam Distillation

PHYSICAL CHARACTERISTICS

Specific Gravity: 0.894 - 0.912
Refractive Index: 1.464 - 1.476
Optical Rotation: -5 to +10 Deg

Gas Chromatogram



ORGANIC
Rosemary



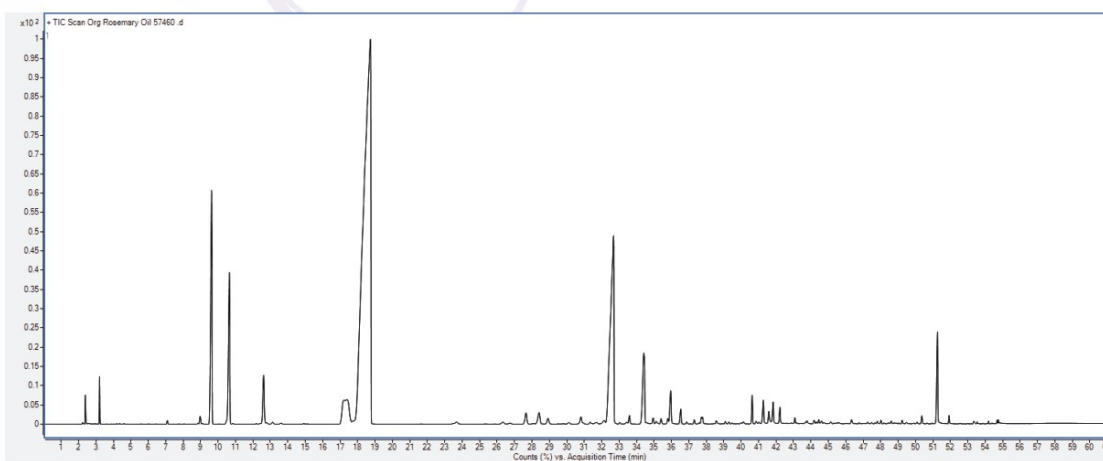
INCI NAME: *Rosmarinus officinalis*
Plant Part: Flowering tops and leaves
Processing: Steam Distillation

PHYSICAL CHARACTERISTICS

Specific Gravity: 0.894 – 0.912
Refractive Index: 1.464 – 1.476
Optical Rotation: -5 to +10 DEG

CHEMICAL CHARACTERISTICS

Gas Chromatogram



Sage



Suggested Use: For aromatherapy use. For all other uses, carefully dilute with a carrier oil such as jojoba, grapeseed, olive, or almond oil prior to use. Please consult an essential oil book or other professional reference source for suggested dilution ratios.

Natural essential oils are highly concentrated and should be used with care.

Caution: Keep out of reach of children. Avoid contact with skin or eyes. If pregnant or lactating, consult your healthcare practitioner before using. Not for internal use.



now®
essential oils

100% pure
sage
Salvia officinalis
Net 1 fl. oz. (30 mL)

Ingredients: 100% pure sage oil.

Aroma: Warm, camphoraceous.

Benefits: Normalizing, balancing, soothing.

Goodnight Sleep Blend: Add 2 drops of sage oil, 1 drop of ylang ylang oil and 20 drops of neroli oil blend to a diffuser and enjoy.

Extraction Method: Steam Distilled from partially dried leaves.

Purity Tested/Quality Assured

Manufactured by: NOW Foods
Bloomington, IL 61818, U.S.A.
www.nowfoods.com

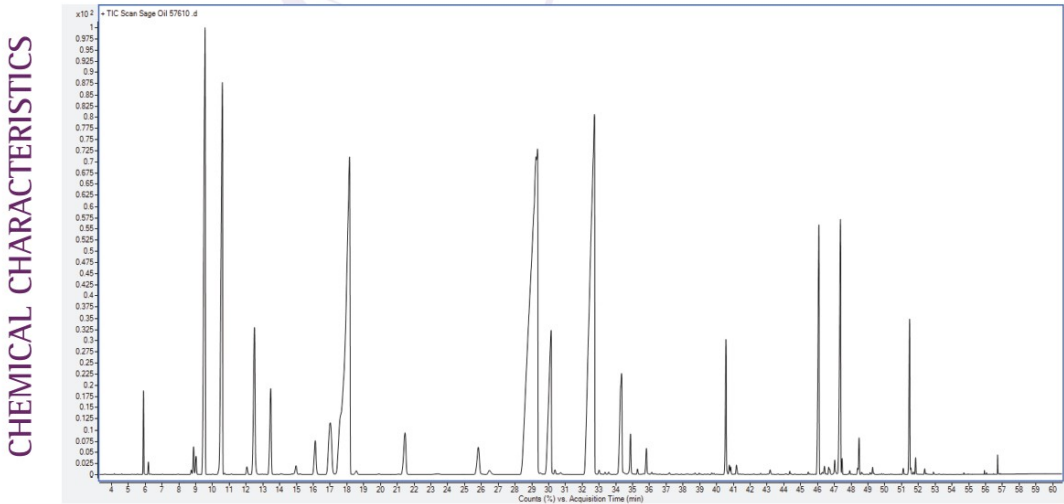
Code 7610

INCI NAME: *Salvia officinalis*
Plant Part: Partially dried leaves
Processing: Steam Distillation

PHYSICAL CHARACTERISTICS

Specific Gravity: 0.903 – 0.925
Refractive Index: 1.457 – 1.469
Optical Rotation: +2 to +29 DEG

Gas Chromatogram



Sandalwood



Suggested Use: This blend is already pre-diluted and ready for use. Please consult an essential oil book or other professional source for suggested uses.

Natural essential oils should be handled with care.

Essential oils blended with carrier oils may clog diffusers; please clean thoroughly after each use.

Caution: Keep out of reach of children. Avoid contact with eyes. If pregnant or nursing, consult your health-care practitioner before using.

Not for internal use.



sandalwood
14% oil blend
Santalum album
1 fl. oz. (30 mL)

Ingredients: Pure jojoba oil & pure sandalwood oil.

Aroma: Subtle floral, undertones of wood and fruit.

Attributes: Grounding, focusing, balancing.

"Me Time" Meditation Blend: Add 1 drop of sandalwood oil blend, 2 drops of clove oil and 3 drops of patchouli oil to a diffuser and enjoy.

Extraction Method: Steam Distilled from wood.

NONNM Essential Oils are analytically tested for identity, purity and adulteration to assure the highest quality.

Manufactured & Quality Tested By:
Broomfield, CO 80018, USA
NOW Foods
www.nowfoods.com

Batch: 75688 vs
7 33729 01668 7

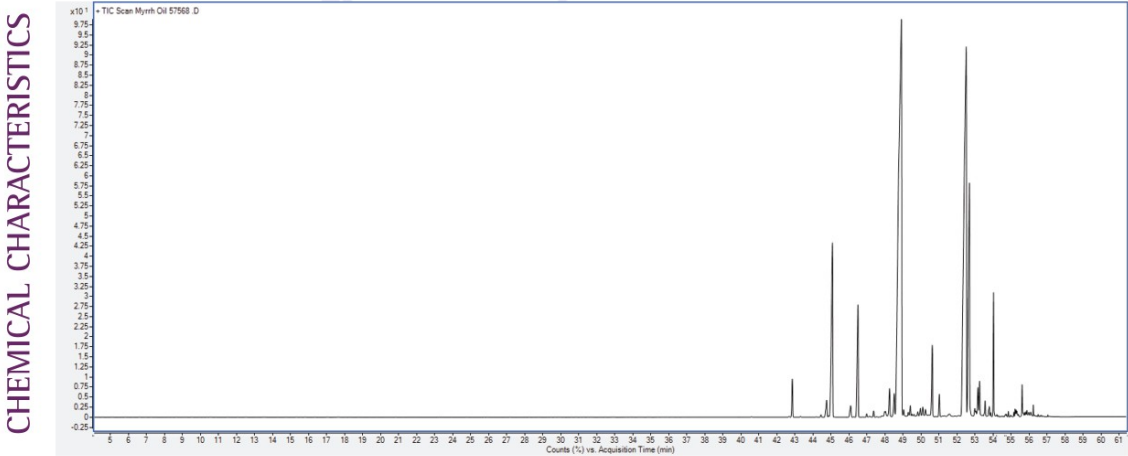
INCI NAME: Santalum album
Plant Part: Wood
Processing: Steam Distillation

NOTE: Physical parameters and chromatogram is for pure sandalwood essential oil.

PHYSICAL CHARACTERISTICS

Specific Gravity: 0.870 – 0.885
Refractive Index: 1.500 – 1.510

Typical Gas Chromatogram



Spearmint



Suggested Use: For aromatherapy use. For all other uses, carefully dilute with a carrier oil such as jojoba, grapeseed, olive, or almond oil prior to use. Please consult an essential oil book or other professional reference source for suggested dilution rates.

Natural essential oils are highly concentrated and should be used with care.

Caution: Keep out of reach of children. Avoid contact with eyes. If pregnant or lactating, consult your healthcare practitioner before using.

100% pure
spearmint
Mentha spicata
Net 1 fl. oz. (30 mL)

Ingredients: 100% pure spearmint oil.

Aroma: Refreshing, minty.

Benefits: Cooling, invigorating, stimulating.

Mixes Well With: bergamot oil, lavender oil, lime oil, rosemary oil.

Extraction Method: Steam Distilled from leaves and flowering tops.

Purity Tested/Quality Assured

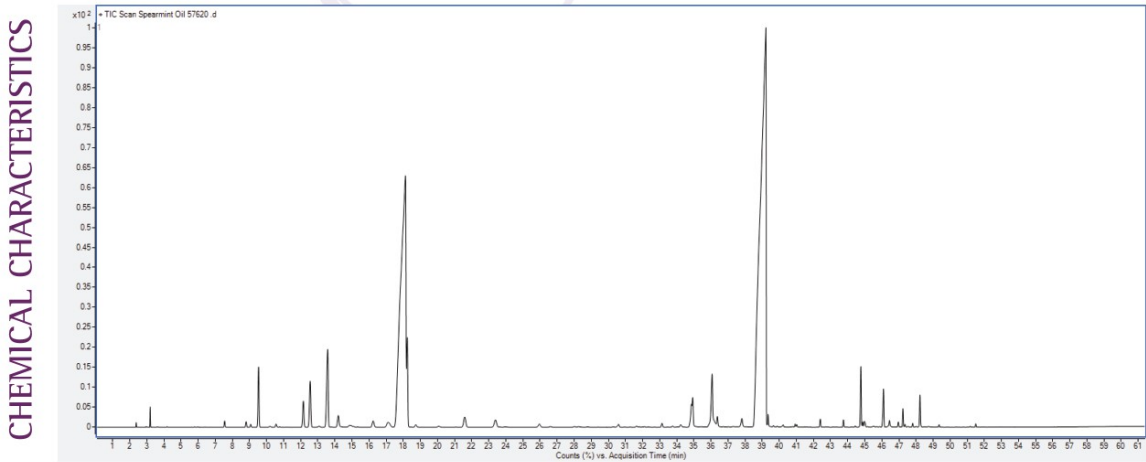
Code 7120

INCI NAME: *Mentha spicata*
Plant Part: Leaves and flowering tops
Processing: Steam Distillation

PHYSICAL CHARACTERISTICS

Specific Gravity: 0.917 – 0.934
Refractive Index: 1.484 – 1.491
Optical Rotation: –59 to –48 DEG

Gas Chromatogram



ORGANIC

Spearmint

CHEMICAL CHARACTERISTICS



Suggested Use: For aromatherapy use. For all other uses, carefully dilute with a carrier oil such as jojoba, grapeseed, olive, or almond oil prior to use. Please consult an essential oil book or other professional reference source for suggested dilution ratios.

Natural essential oils are highly concentrated and should be used with care.

Caution: Keep out of reach of children. Avoid contact with eyes. If pregnant or nursing, consult your healthcare practitioner before using.

certified organic & 100% pure
spearmint
Mentha spicata
1 fl. oz. (30 mL)

USDA ORGANIC

Ingredient: Organic spearmint oil (100% pure).

Aroma: Refreshing, minty.

Attributes: Cooling, invigorating, stimulating.

Mixes Well With: bergamot oil, lavender oil, lime oil, rosemary oil.

Extraction Method: Steam Distilled from flowering tops.

Purity Tested/Quality Assured

NOW Foods, Inc. 801108, USA
Manufactured in USA
Certified Organic by NAI

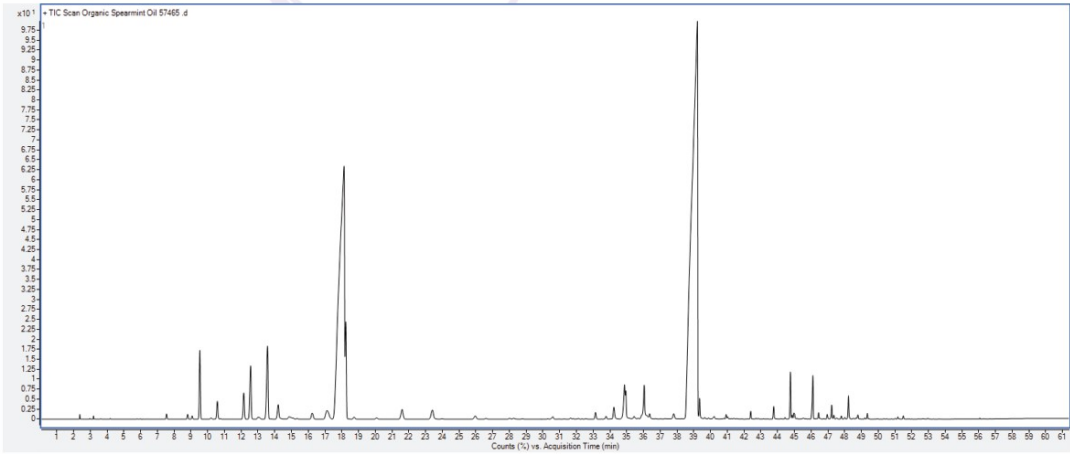
Code 7485 v1

INCI NAME: *Mentha spicata*
Plant Part: Leaves and flowering tops
Processing: Steam Distillation

PHYSICAL CHARACTERISTICS

Specific Gravity: 0.917 – 0.934
Refractive Index: 1.484 – 1.491
Optical Rotation: –59 to –48 DEG

Gas Chromatogram



Spike Lavender



Suggested Use: For aromatherapy use. For all other uses, carefully dilute with a carrier oil such as jojoba, grapeseed, olive, or almond oil prior to use. Please consult an essential oil book or other professional reference source for suggested dilution ratios.

Natural essential oils are highly concentrated and should be used with care.

Caution: Keep out of reach of children. Avoid contact with eyes. If pregnant or nursing, consult your healthcare practitioner before using. **Not for internal use.**

100% pure
spike lavender
Lavandula latifolia
1 fl. oz. (30 mL)

Ingredient: 100% pure spike lavender oil.

Aroma: Spicy, floral, camphoraceous, fresh.

Attributes: Purifying, cleansing, clarifying.

Mixes Well With: mint oils, eucalyptus oil, lavender oil, balsam fir, needle oil.

Extraction Method: Steam Distilled from fresh flowering tops.

NOW® Essential Oils are analytically tested for identity, purity and adulteration to assure the highest quality.

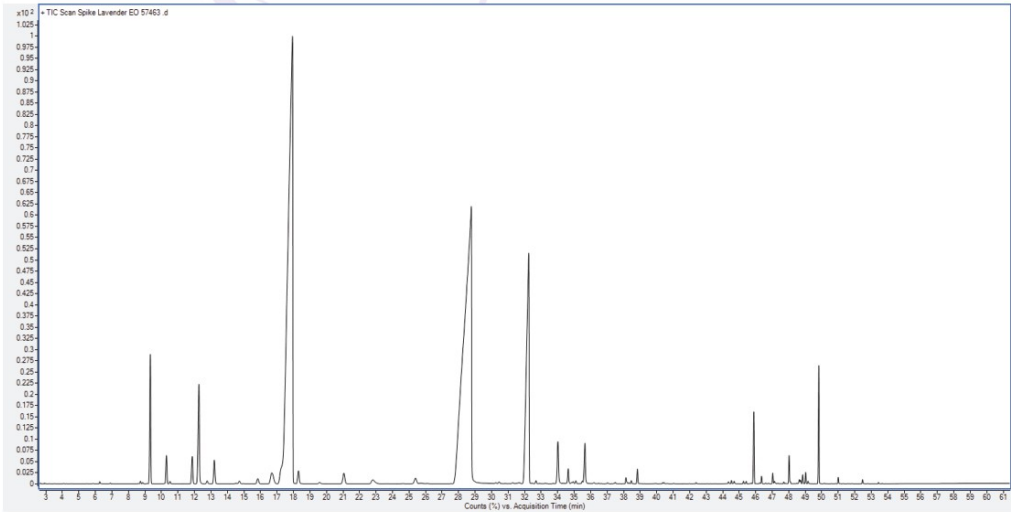
Code 7463 V2

INCI NAME: *Lavandula latifolia*
Plant Part: Flowering tops
Processing: Steam Distillation

PHYSICAL CHARACTERISTICS
Specific Gravity: 0.890 – 0.917
Refractive Index: 1.461 – 1.468

Gas Chromatogram

CHEMICAL CHARACTERISTICS



Tangerine



Suggested Use: For aromatherapy use. For all other uses, carefully dilute with a carrier oil such as jojoba, grapeseed, olive, or almond oil prior to use. Please consult an essential oil book or other professional reference source for suggested dilution ratios.

Natural essential oils are highly concentrated and should be used with care.

Caution: Keep out of reach of children. Avoid contact with eyes. If pregnant or lactating, consult your healthcare practitioner before using. Do not use on skin. Reacts strongly to sunlight and other sources of ultraviolet light.

100% pure
tangerine
Citrus reticulata
Net 1 fl. oz. (30 mL)

Ingredients: 100% pure tangerine oil.

Aroma: Pleasant, orange-like.

Benefits: Cheerful, inspiring, invigorating.

Vanilla Citrus Dream Blend: Add 1 drop each of tangerine oil and orange oil along with 15 drops of vanilla concentrate oil to a diffuser and enjoy.

Extraction Method: Cold Pressed from fresh fruit peel.

Purity Tested/Quality Assured

Manufactured by NOW Foods, Inc. Bloomington, IN 47403, U.S.A.
www.nowfoods.com

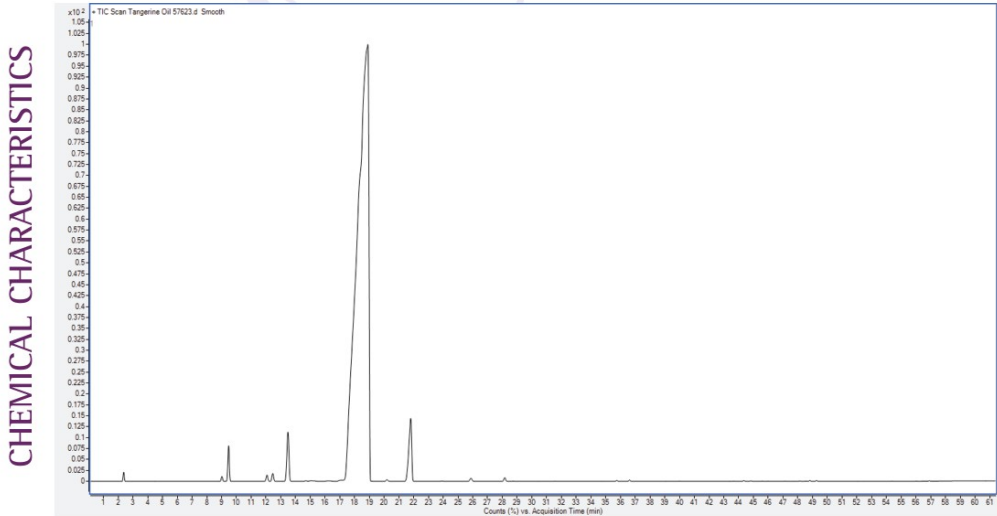
Code 7823

INCI NAME: *Citrus reticulata*
Plant Part: Fresh fruit peel
Processing: Cold Pressed

PHYSICAL CHARACTERISTICS

Specific Gravity: 0.844 – 0.854
Refractive Index: 1.473 – 1.476
Optical Rotation: +88 to +96 DEG

Gas Chromatogram



Tea Tree



Suggested Use: For aromatherapy use. For all other uses, carefully dilute with a carrier oil such as jojoba, grapeseed, olive, or almond oil prior to use. Please consult an essential oil book or other professional reference source for suggested dilution ratios.

Natural essential oils are highly concentrated and should be used with care.

Caution: Keep out of reach of children. Avoid contact with eyes. If pregnant or nursing, consult your health-care practitioner before using. **Not for internal use.**

100% pure
tea tree
Melaleuca alternifolia
1 fl. oz. (30 mL)

Ingredient: 100% pure tea tree oil.

Aroma: Potent, warm, spicy.

Attributes: Cleansing, purifying, renewing.

Purifying Room Blend: Add 1 drop each of tea tree oil and grapefruit oil, along with 10 drops of lemon oil to a diffuser and enjoy.

Extraction Method: Steam Distilled from leaves and twigs. NOW® Essential Oils are analytically tested for identity, purity and adulteration to assure the highest quality.

Quality Tested & Packaged by: NOW Foods, Inc. 8001088 USA, nowfoods.com/essential-oils

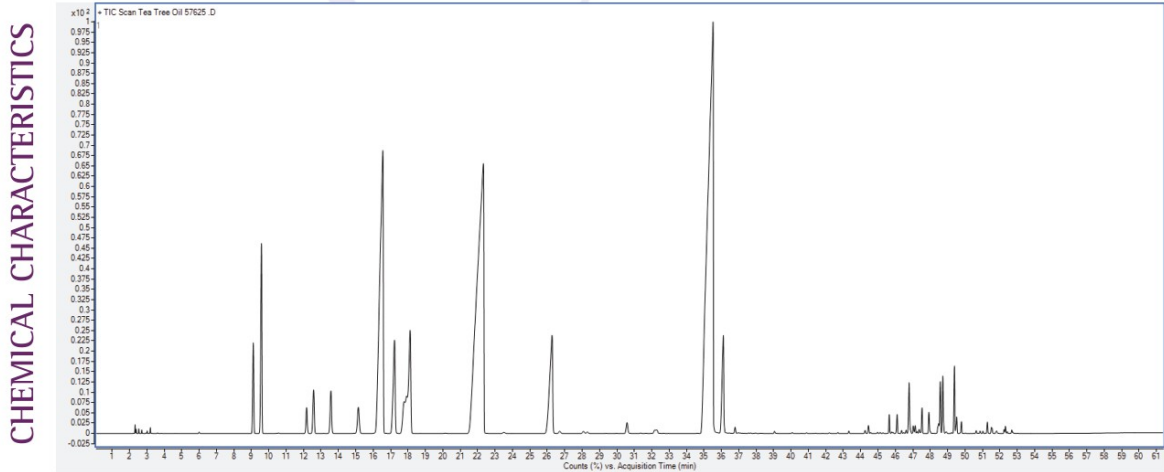
Code 7625 v4
7 53591 07625 0

INCI NAME: *Melaleuca alternifolia*
Plant Part: Leaves and twigs
Processing: Steam Distillation

PHYSICAL CHARACTERISTICS

Specific Gravity: 0.885 – 0.906
Refractive Index: 1.475 – 1.482
Optical Rotation: +7 to +12 DEG

Gas Chromatogram



ORGANIC
Tea Tree



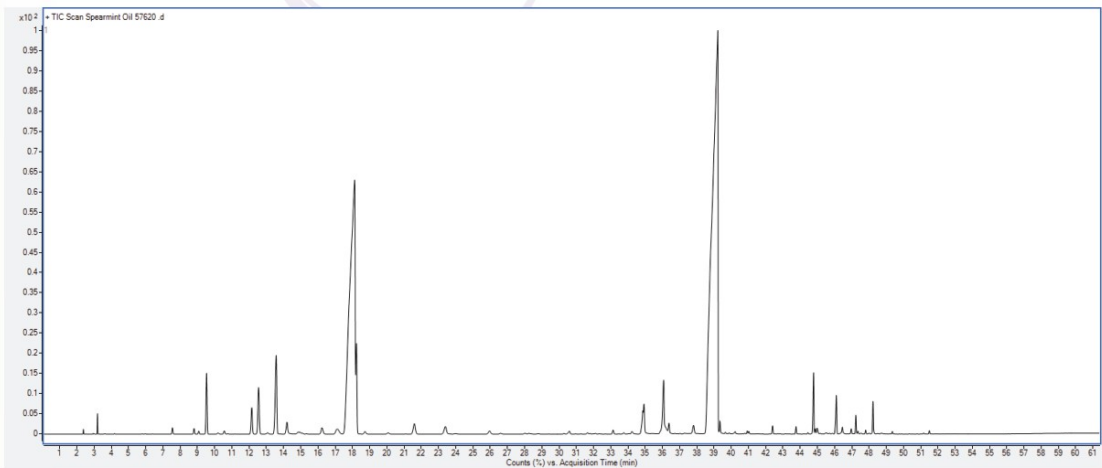
INCI NAME: *Melaleuca alternifolia*
Plant Part: Leaves and twigs
Processing: Steam Distillation

PHYSICAL CHARACTERISTICS

Specific Gravity: 0.888 - 0.909
Refractive Index: 1.475 - 1.482
Optical Rotation: +7 to +12 DEG

Gas Chromatogram

CHEMICAL CHARACTERISTICS



Turmeric



Suggested Use: For aromatherapy & topical use. For topical use, carefully dilute with a carrier oil, lotion, etc. prior to use. Please consult an essential oil book or other professional reference source for suggested dilution ratios.

Suggested dilution: 2-3 drops of turmeric oil per 1 teaspoon of carrier oil or moisturizer.

Natural essential oils are highly concentrated and should be used with care.

Caution: Keep out of reach of children. Avoid contact with eyes. If pregnant or nursing, consult your healthcare practitioner before using.

100% pure turmeric
Curcuma longa
1 fl. oz. (30 mL)

Ingredient: Curcuma Longa (Turmeric) Rhizome Oil (α-Turmerone CT).

Aroma: Spicy, earthy, warm.

Attributes: Soothing, uplifting, balancing.

Mixes Well With: cardamom, ginger, frankincense, lavender, sandalwood, tangerine

Extraction Method: Steam Distilled from rhizomes.

NOW® Essential Oils are analytically tested for identity, purity and adulteration to assure the highest quality.

NOW Foods, Bloomington, IL 61708, USA
nowfoods.com/essential-oils
nowfoods.com/essential-oils
© 2022 NOW Foods, Inc. All rights reserved.

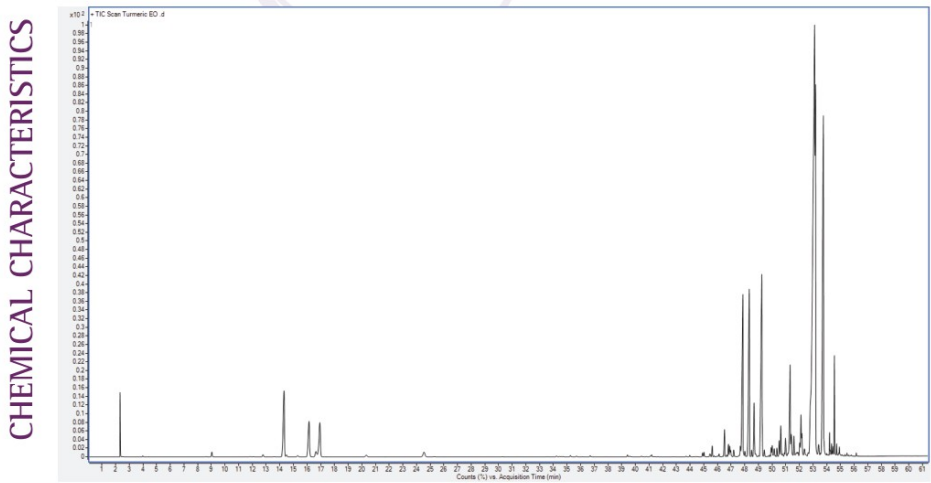
Code 7706 Y1
3 379 0706 6

INCI NAME: *Curcuma longa*
Plant Part: Rhizomes
Processing: Steam Distillation

PHYSICAL CHARACTERISTICS

Specific Gravity: 0.871 – 0.940
Refractive Index: 1.475 – 1.513
Optical Rotation: –22 to +30 DEG

Gas Chromatogram



Vetiver



Suggested Use: For aromatherapy use. For all other uses, carefully dilute with a carrier oil such as jojoba, grapeseed, olive, or almond prior to use. Please consult an essential oil book or other professional reference source for suggested dilution ratios.

Natural essential oils are highly concentrated and should be used with care.



100% pure
vetiver
Vetiveria zizanioides
1/3 fl. oz. (10 mL)

Ingredient: Vetiveria Zizanioides (Vetiver) Oil.
Aroma: Sweet, earthy, woody.
Extraction Method: Steam Distilled from roots.

Caution: Keep out of reach of children. Avoid contact with eyes. If pregnant or nursing, consult your healthcare practitioner before using.
Not for internal use.

Quality Tested by & Packaged for:
NOW Foods
Bloomington, IL 61708, USA
nowfoods.com/essential-oils
Packaged in the USA.

INCI NAME:	Vetiveria zizanioides
Plant Part:	Roots
Processing:	Steam Distillation

PHYSICAL CHARACTERISTICS

Specific Gravity:	0.980–1.035
Refractive Index:	1.519–1.529
Optical Rotation:	+17 to +46 DEG

Gas Chromatogram



White Thyme



Suggested Use: For aromatherapy use. For all other uses, carefully dilute with a carrier oil such as jojoba, grapeseed, olive, or almond prior to use. Please consult an essential oil book or other professional reference source for suggested dilution ratios.

Natural essential oils are highly concentrated and should be used with care.

Caution: Keep out of reach of children. Avoid contact with skin or eyes. If pregnant or nursing, consult your healthcare practitioner before using.

100% pure white thyme
Thymus vulgaris/zygis
1 fl. oz. (30 mL)

Ingredient: Thymus Vulgaris/Zygis (White Thyme) Oil.

Aroma: Pleasant, pungent.

Attributes: Uplifting, empowering, clarifying.

Mixes Well With: basil oil, lavender oil, lemon oil, marjoram oil.

Extraction Method: Steam Distilled from aerial parts.

NOW® Essential Oils are analytically tested for identity, purity and adulteration to assure the highest quality.

Quality Tested & Packaged by: NOW Foods, Inc. 25018, USA
nowfoods.com/essential-oils

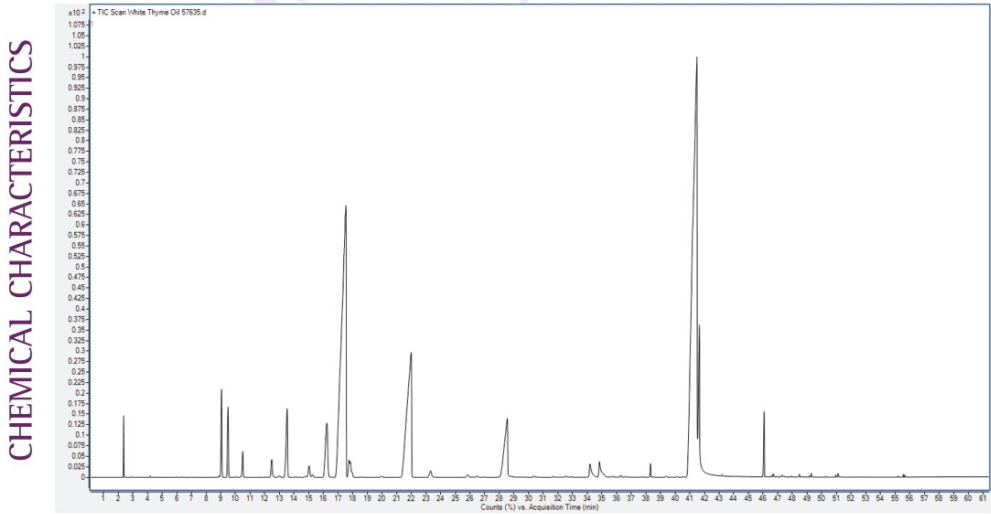
Code 7835 14
3373907635 9

INCI NAME: *Thymus vulgaris/zygis*
Plant Part: Flowering tops
Processing: Steam Distillation

PHYSICAL CHARACTERISTICS

Specific Gravity: 0.915 - 0.935
Refractive Index: 1.495 - 1.505
Optical Rotation: -3.0 to -0.1 DEG

Gas Chromatogram



Wintergreen



Suggested Use: For aromatherapy use. For all other uses, carefully dilute with a carrier oil such as jojoba, grapeseed, olive, or almond oil prior to use. Please consult an essential oil book or other professional reference source for suggested dilution ratios.

Natural essential oils are highly concentrated and should be used with care.

Caution: Contains methyl salicylate. Avoid contact with skin and eyes. If swallowed, give water and call physician immediately. In case of contact with eyes or skin, flush thoroughly with water. For eyes, get medical attention. Keep out of reach of children. If pregnant or lactating, consult your healthcare practitioner before using. Not for internal use. **May be harmful or fatal if swallowed.**

now
essential oils



100% pure
wintergreen
Gaultheria procumbens
Net 1 fl. oz. (30 mL)

Ingredients: 100% pure wintergreen oil.
Aroma: Warm, sweet.
Benefits: Stimulating, refreshing, uplifting.
Mixes Well With: eucalyptus oil, lemon oil, peppermint oil, tangerine oil.
Extraction Method: Steam Distilled from leaves.
Purity Tested/Quality Assured

Code 7040 7

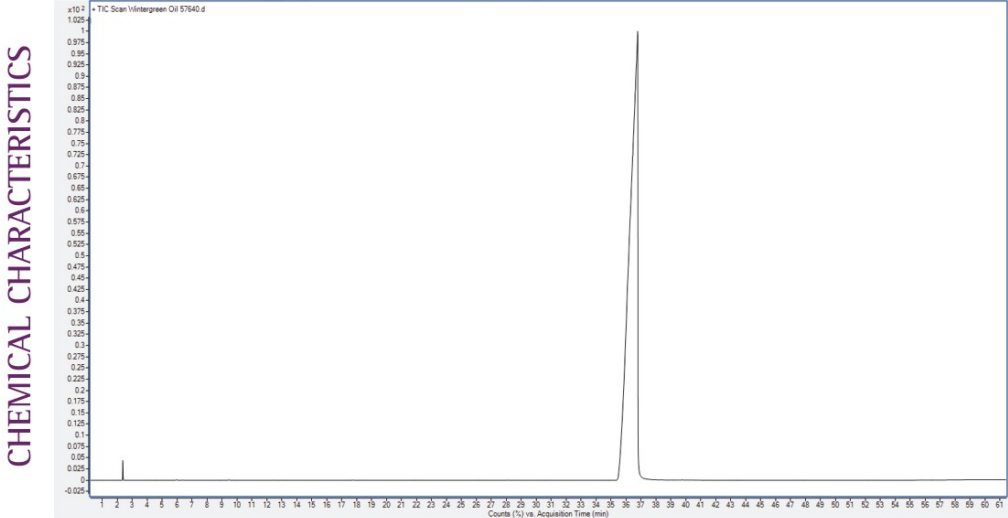
100% Purity Guaranteed
www.nowfoods.com

INCI NAME: *Gaultheria procumbens*
Plant Part: Leaves
Processing: Steam Distillation

PHYSICAL CHARACTERISTICS

Specific Gravity: 1.176 – 1.182
Refractive Index: 1.535 – 1.538
Optical Rotation: –1.500 to +0.500

Gas Chromatogram



Ylang Ylang Extra



Suggested Use: For aromatherapy use. For all other uses, carefully dilute with a carrier oil such as jojoba, grapeseed, olive, or almond oil prior to use. Please consult an essential oil book or other professional reference source for suggested dilution ratios.

Natural essential oils are highly concentrated and should be used with care.

Caution: Keep out of reach of children. Avoid contact with eyes. If pregnant or lactating, consult your healthcare practitioner before using. Not for internal use.

100% pure ylang ylang extra
Cananga odorata
Net 1 fl. oz. (30 mL)

Ingredients: 100% pure ylang ylang extra oil.

Aroma: Pleasant, floral.

Benefits: Soothing, comforting, romantic.

Cloud 9 Blend: Add 1 drop each of ylang ylang oil and rose absolute oil, 5 drops of patchouli oil and 4 drops of sandalwood oil blend to a diffuser and enjoy.

Extraction Method: Steam Distilled from plant's flowering tops.

Purity Tested/Quality Assured

Manufactured by NOW Foods, Inc. • www.nowfoods.com

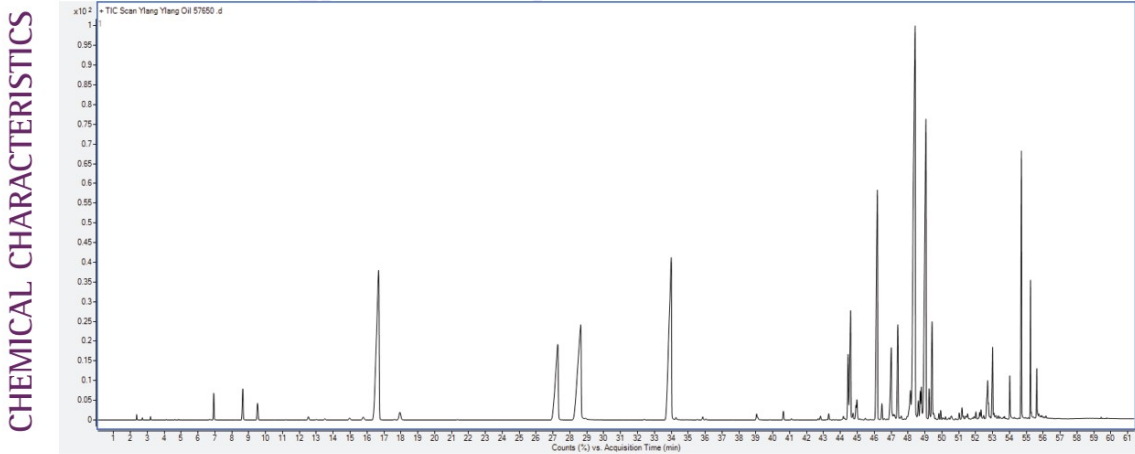
Code 7650

INCI NAME: *Cananga odorata*
Plant Part: Flowering tops
Processing: Steam Distillation

PHYSICAL CHARACTERISTICS

Specific Gravity: 0.935 - 0.985
Refractive Index: 1.498 - 1.509
Optical Rotation: -46.0 to -25.0 DEG

Gas Chromatogram



nowfoods.com/essential-oils 800.999.8069 244 Knollwood Drive, Bloomingdale, IL 60108

